

X5mini

AI Ultra Small

Industrial Barcode Reader

X5mini AI is an ultra-compact industrial vision scanner powered by advanced AI algorithms and a dual-core processor. It excels at reading high-density, small-sized, and various material barcodes, particularly in challenging scenarios involving reflective surfaces and high-contrast environments. With plug-and-play setup, it simplifies deployment and ensures reliable, efficient data traceability.



► Suitable for multi-station barcode reading

- Taking into account both short-range recognition of small barcodes and medium-range recognition of standard barcodes, intelligent switching

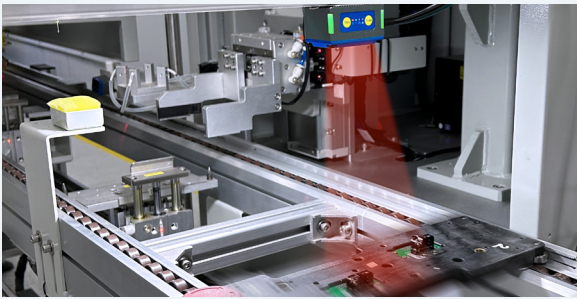
HD lens
50-120mm



SR lens
120-350mm

► Integrated sensor trigger

- No need to equip external trigger sensors, helping users save implementation costs



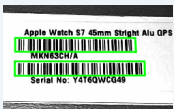
► Compact size

- 55mm x 35mm x 32mm, easy to integrate



► Excellent barcode reading performance

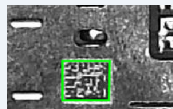
- Suitable for the following barcodes



High-density 1D label code



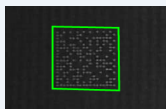
Micro size laser engraving code



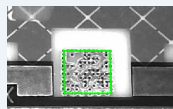
Laser engraving code on metal surface



Low contrast laser engraving codes



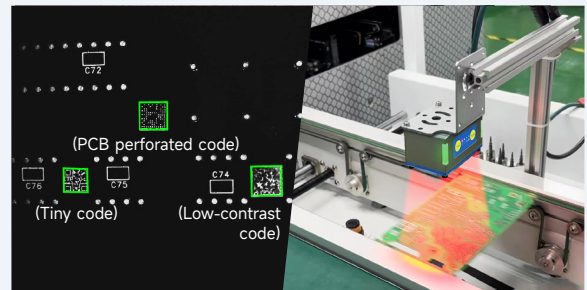
Engraved DPM code on PCB surface



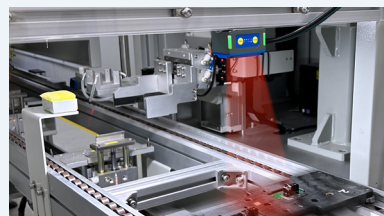
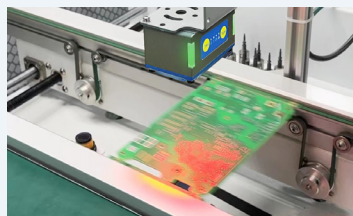
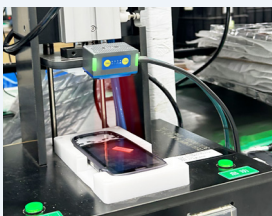
Perforated DPM code on PCB surface

► Instant setup, auto-adjustment

- No parameter setting needed, automatically adapts to barcodes on all materials.



► Recommended application scenarios



- Test fixture
- SMT barcode reading
- Automation equipment integration

X5mini AI Specification

Image sensors

Sensor	CMOS image sensor with global shutter
Resolution	1.3 million pixels, 1080 x 1280

Light emitter

Light source	Red+Blue,Automatically switched+Manually adjusted
Aimer	Laser dot

Focus adjustment

Focus adjustment	Binocular fixed focus
------------------	-----------------------

Reading specifications

1 D	Code128、GS1 128、Code39、Code93、Codabar、2of5(Industrial 2of5)、EAN/UPC
2 D	QR、DataMatrix (ECC200)、PDF417、Micro PDF417
Resolution	1D: 3.3mil 2D: 5.0mil
Reading range	50mm ~ 350mm
FOV	50mm: 36mm*30mm 100mm: 70mm*60mm 200mm: 95mm*85mm 300mm: 140mm*120mm 350mm: 170mm*140mm

Control input

Points	2
Input type	Bidirectional voltage input
Maximum rating	30V
Minimum ON voltage	<4V
Maximum OFF current	0.001A

Weight / Dimensions

Weight	133±5g
Dimensions	55mm x 35mm x 32mm

Control output

Points	2
Output type	2 optocoupler output
Maximum rating	30V
Leakage current when OFF	0.1mA or less
Residual voltage when ON	1V or less

Ethernet

Supported protocol	TCP Client, TCP Server, Profinet, MELSEC, Ethernet/IP, ModBusTcp(poll/slave), Fins
--------------------	--

Serial communication

Communication speed	115200/57600/38400/19200/9600 bps
Supported protocol	RS232

USB

Communication standard	USB 2.0 Full Speed
------------------------	--------------------

TOF

Automatic ranging	0-450mm automatic ranging
-------------------	---------------------------

Environmental Resistance

Enclosure rating	IP65
Working temperature	0°~50°C
Storage temperature	-20°C ~70°C
Relative humidity	5% to 95% RH (No condensation)
Storage ambient humidity	5% to 95% RH (No condensation)
Ambient light	0~10000 lux
Operating environment	No dust or corrosive gas present

Rating

Power supply voltage	10~30V DC
Current consumption	0.5 ~ 1.5A



Official Website:
www.seuic.us
en.seuic.com



Service Mail:
inquiry@seuic.us
marketing@seuic.com

