

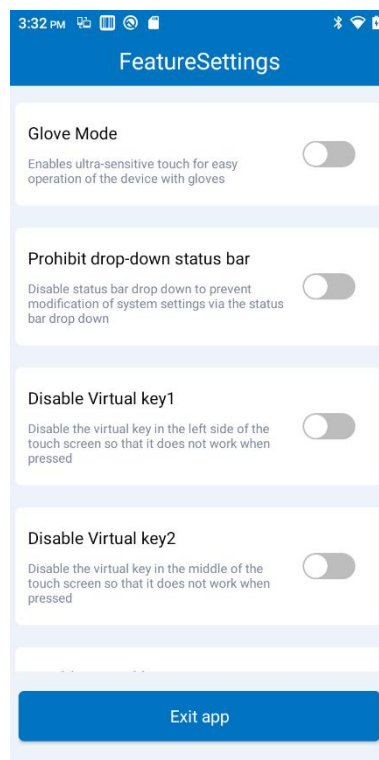
Featuresettings instruction manual

Directory

Featuresettings instruction manual	1
1. Featuresettings	2
1.1. Fn key sticky once mode	3
1.2. Block the P5 function buttons	4
1.3. Block the P7 function buttons	4
1.4. Disable the HOME button	4
1.5. Touch screen Glove Mode	4
1.6. Prohibit drop-down status bar	4
1.7. Hide the soft keyboard	4
1.8. Disable Virtual key 1	4
1.9. Disable Virtual key 2	4
1.10. Disable Virtual key 3	4
1.11. Disable pass scan key value to application	5
1.12. Show scan suspension button	5
1.13. Hard keyboard tone	5
1.14. Disable dropping detection	5
1.15. getDeviceId() return IMEI	5
1.16. Allow the File app to install the app	5
1.17. Fixed charging mode	6
1.18. Allow all apps install unknown source apps	6
1.19. Allows opening the Developer Item without entering a password	6
1.20. Scan key wakes up scanning	6
1.21. Lift the wake-up device	6
1.22. Voice keys are enabled	6
1.23. PTT key customization	6
1.24. USB charging only	6
1.25. Support screen inverted rotation display	7
1.26. Application Compatibility Mode	7
1.27. Scan key to wake up bright screen	7
1.28. Hide the navigation bar	7
1.29. Double click to wake up screen	7

1. Featuresettings

This application is used for the rapid realization of customer special needs, which is convenient for customers to use quickly. The main functions are shown in Figure 1-1 below.



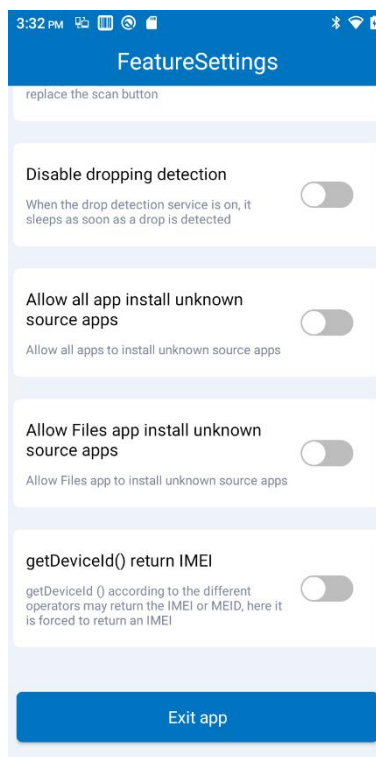
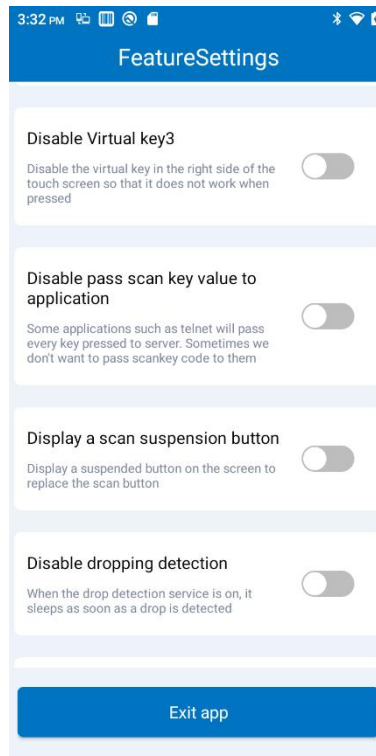


Figure 1-1 Features Settings

1.1. Fn key sticky once mode

When switching to Fn key mode, press the corresponding number key to output

F1~F10 once, and immediately switch back to Num mode.

1.2. Block the P5 function buttons

When this function is turned on, the P5 key function fails.

1.3. Block the P7 function buttons

When this function is turned on, the P7 key function fails.

1.4. Disable the HOME button

This function is enabled: need to restart to take effect, and the HOME key hard keyboard cannot be used.

This function is turned off: a restart is required to take effect, and the HOME key hard keyboard can be used.

1.5. Touch screen Glove Mode

Turn on this function to support the operation of the touch screen with gloves, when the sensitivity of the touch screen is high.

1.6. Prohibit drop-down status bar

This feature is on: Drop-down menus are not available.

This function is turned off: drop-down menus can be displayed normally.

1.7. Hide the soft keyboard

This function is on: the input box interface cannot bring up the soft keyboard.

This feature is turned off: the soft keyboard can be used normally.

1.8. Disable Virtual key 1

This feature is on: Block the virtual key on the left side of the lower touch screen (the left navigation key at the bottom of the full screen screen) so that pressing it does not work.

This function is turned off: the virtual key on the left side of the lower touch screen (the left navigation key at the bottom of the full screen screen) can be used normally.

1.9. Disable Virtual key 2

This function is turned on: Block the lower middle virtual key of the touch screen (the middle navigation key at the bottom of the full screen screen) so that it does not work when pressed.

This function is turned off: the middle virtual key on the lower part of the touch screen (the middle navigation key at the bottom of the full screen screen) can be used normally.

1.10. Disable Virtual key 3

This feature is turned on: Block the virtual key on the lower right side of the touchscreen (the right navigation key at the bottom of the full screen screen) so that pressing it will not work.

This function is turned off: the virtual key on the lower right side of the touch screen (the right navigation key at the bottom of the full screen screen) can be used normally.

1.11.Disable pass scan key value to application

This feature is turned on: Some applications such as Telnet will transmit all pressed keys to the server.

This feature is off: In some cases, applications such as Telnet are prohibited from transmitting all pressed keys to the server.

1.12.Show scan suspension button

This function is turned on: there is a floating button on the screen interface, which can be scanned by touching the screen.

This feature is off: there is no floating button on the screen, and the scan function can only be triggered by pressing the scan hard key.

1.13.Hard keyboard tone

This function is turned on: use the physical key keyboard, there is a corresponding key tone.

This function is turned off: use a physical key keyboard, no corresponding key tone.

1.14.Disable dropping detection

This feature is on: the system does not go to sleep when the device is dropped.

This feature is off: The system immediately goes to sleep when a drop is detected.

1.15.getDeviceId() return IMEI

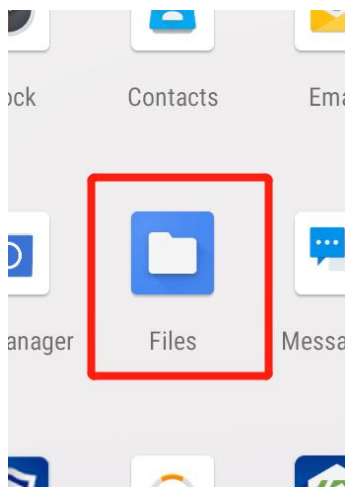
This feature is turned on: getDeviceId() forces the return of IMEI values.

This feature is off: The getDeviceId() interface may return IMEI or MEID values depending on the carrier's standard.

1.16. Allow the File app to install the app

This feature is turned on: Enter the correct developer password to open, allowing the Files app to install apps from unknown sources.

This feature is off: User authorization is required to install apps from unknown sources.



1.17.Fixed charging mode

This function is on: connect the charger status to prevent overcharging and only allow charging within the percentage range set by the system.

This function is off: connected charger state, charging all the time.

1.18.Allow all apps install unknown source apps

This feature is enabled: Enter the correct developer password to open, allowing all apps to install apps from unknown sources. This switch takes precedence over "Allow file app installation from unknown sources".

This feature is off: User authorization is required to install apps from unknown sources.

1.19.Allows opening the Developer Item without entering a password

This function is turned on: enter the correct developer password to open, through the settings - about to enter the developer option do not need to enter the password.

This feature is turned off: you need to enter the password to enter the developer item.

1.20.Scan key wakes up scanning

This function is turned on: it can only be turned on when there is no lock screen, and the device is awake and scanned by light when the device is sleeping.

This feature is off: This feature is not available.

1.21.Lift the wake-up device

This function is on: it can only be turned on when there is no lock screen, and the device will wake up when the device is awakened when it is lifted in the hibernation state

This feature is off: This feature is not available.

1.22.Voice keys are enabled

This feature is on: it can only be turned on when there is no lock screen, and pressing the voice key wakes the device and triggers speech recognition.

This feature is off: This feature is not available.

1.23.PTT key customization

List options:

None: No custom keys

Flashlight: The PTT key is used as a flashlight, press the PTT key to turn on the flashlight, and press the key to turn off again.

Pupil light: PTT key is used as pupil light, press the PTT key to turn on the pupil light, and press the key to turn off again.

1.24.USB charging only

This function is on: need to restart to take effect, USB can only be used as charging function.

This function is turned off: a restart is required to take effect, and the USB can be used normally.

1.25.Support screen inverted rotation display

This function is on: Allow the screen to rotate 180 degrees after it is turned on.

This feature is off: This feature is not available.

1.26.Application Compatibility Mode

This feature is on: App compatibility mode.

This feature is off: This feature is not available.

1.27.Scan key to wake up bright screen

This function is on: the device sleeps and presses the scan key to light up.

This feature is off: This feature is not available.

1.28.Hide the navigation bar

This function is turned on: hide the three touch screen buttons of Back, Home, and Taskbar at the bottom of the screen, and swipe up from the bottom to pop up.

This function is turned off: the three touchscreen buttons at the bottom of the screen: Back, Home, and Taskbar are displayed normally.

1.29.Double click to wake up screen

This function is on: After it is turned on, double-tap twice on the screen to wake up the screen

This feature is off: This feature is not available.