



Mobile Butler instruction manual

Directory

Mobile Butler instruction manual 1

1.Mobile Butler..... 2

 1.1. Main interface 2

 1.2. List of apps 4

 1.3. Common settings 6

1. Mobile Butler

This app is used as a desktop app, and you can specify the application displayed on the desktop, set a password, set a boot-up auto-start, and other functions.

1.1. Main interface

The user needs to set the password as shown in Figure 1-1 to enter the application for the first time, and the USB switch will be turned off when the first run is run.

As shown in Figure 1-2, there are two function entries for the main interface:

Add an application: Click the plus button in the lower right corner, click Enter Password, enter the Add Application page, and display the specified application icon can include system applications, user applications, and bookmarks.

Settings: The settings button at the top right, click Enter Password to enter the settings interface

Figure 1-3 shows the page for entering the password

Description: (Super password: 20020322).

Upgrading an APK should remain in the APK's previous state (desktop, auto-start).

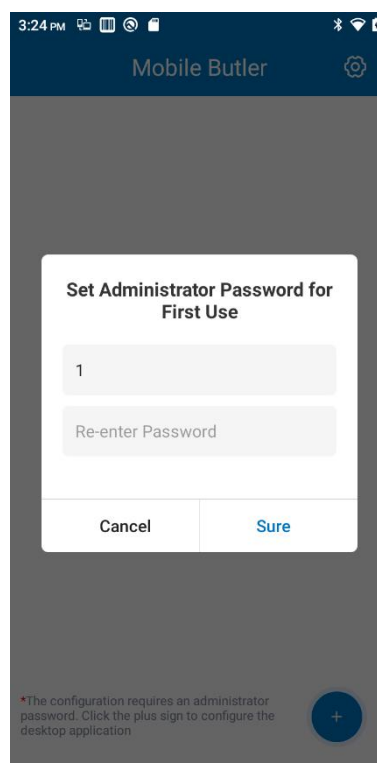


Figure 1-1: Enter the application for the first time to set the password

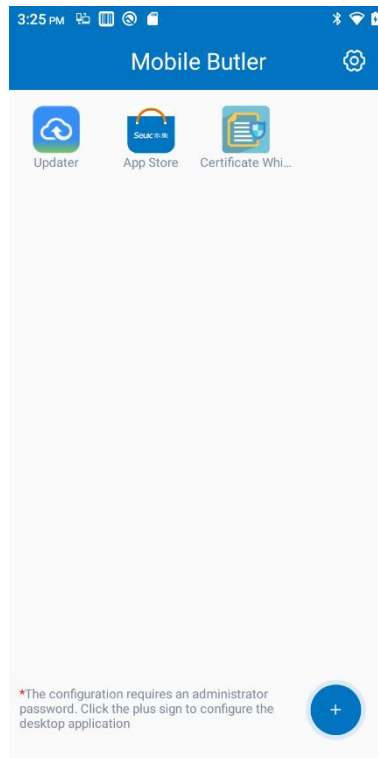


Figure 1-2 Main interface

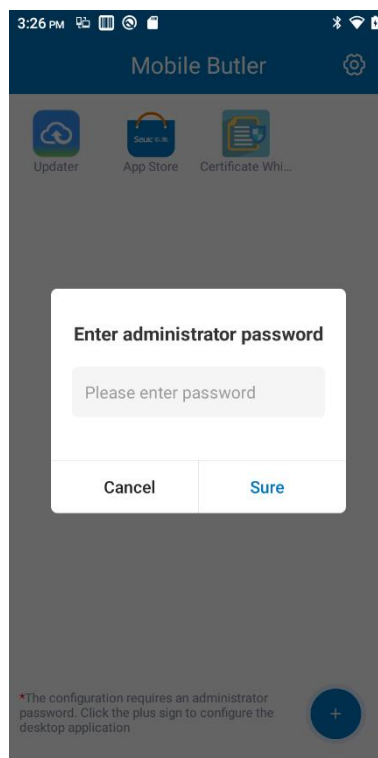


Figure 1-3 Enter the password

1.2. List of apps

Enter by the Add button on the main interface

Application list: Figure 1-4-1 system application list, Figure 1-4-2 User installation should have list, Figure 1-4-3 bookmarks (bookmarks can only be added when Mobile Butler is the default desktop) list three tabs:

The list displays the application icon, application name, auto-launch option, desktop option

Check Desktop: If checked, the app will be displayed on the desktop, and you can select multiple options.

Check Auto-start: Check the app will boot auto-start, radio selection.

Click Save All Configurations: The selected applications will take effect and will be displayed on the desktop.

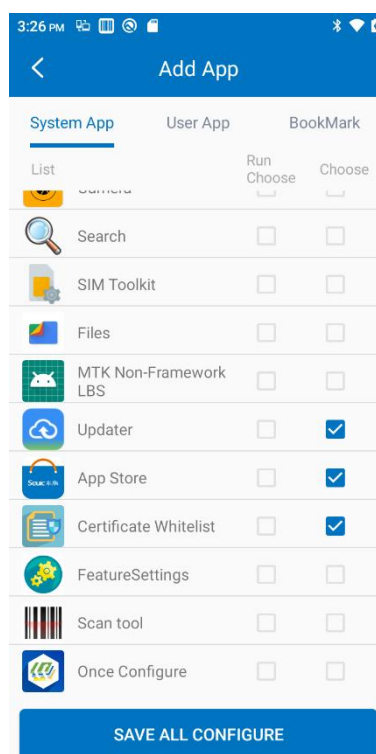


Figure 1-4-1 Application list - the system application list

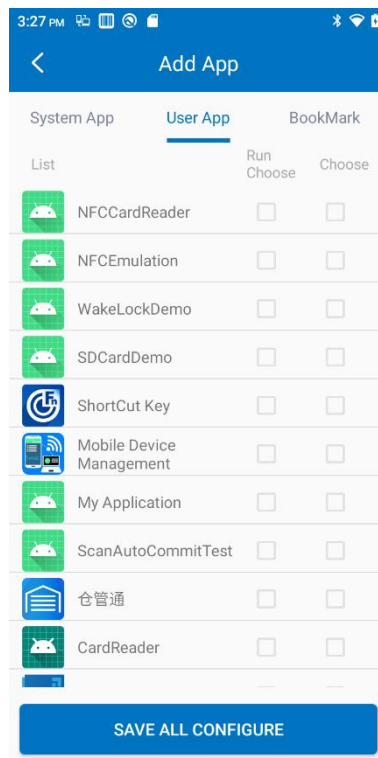


Figure 1-4-2 Application list - user application list

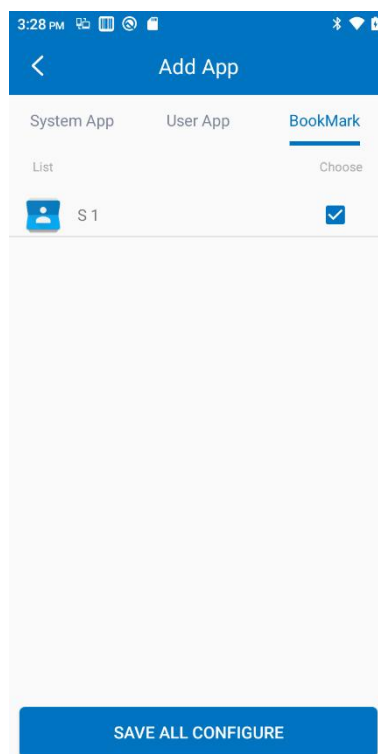


Figure 1-4-3 Application list screen - bookmark list

1.3. Common settings

As shown in Figure 1-5, the page includes the following functions:

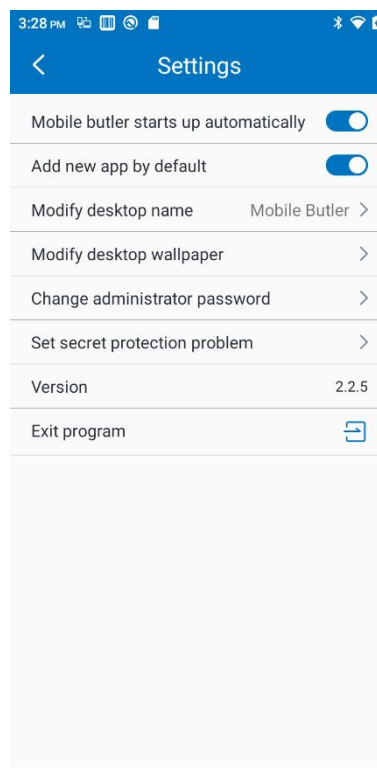


Figure 1-5 General settings page

- 1) Mobile Butler Boot Auto-Start: Set Startup to set Mobile Butler as the default desktop. (Note: The button displays "Mobile Butler Boot Auto" to indicate that the current default desktop is Mobile Butler). If it is not enabled, click and then pop up a pop-up box to confirm the opening, as shown in Figure 1-6 below, click to confirm and return to the main interface; If it is enabled, click and then pop-up box will pop up to confirm the closure, as shown in Figure 1-7 below, click to confirm and exit the application.
- 2) Allow new apps to be added by default: Installed apps will appear on the desktop by default, and if not allowed, they will not be automatically added on the desktop.
- 3) Modify the desktop name: The default is "Mobile Butler", which is used to display at the desktop title.
- 4) Modify the desktop wallpaper: You can choose from gallery and wallpapers.
- 5) Change Administrator Password: Change the current password.
- 6) Set the password question settings
- 7) Version: Displays the version information
- 8) Exit the program" Click Quit app"

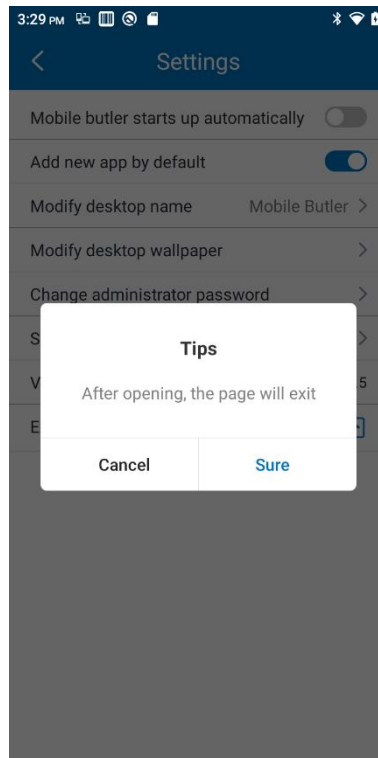


Figure 1-6: Boot auto-start confirmation

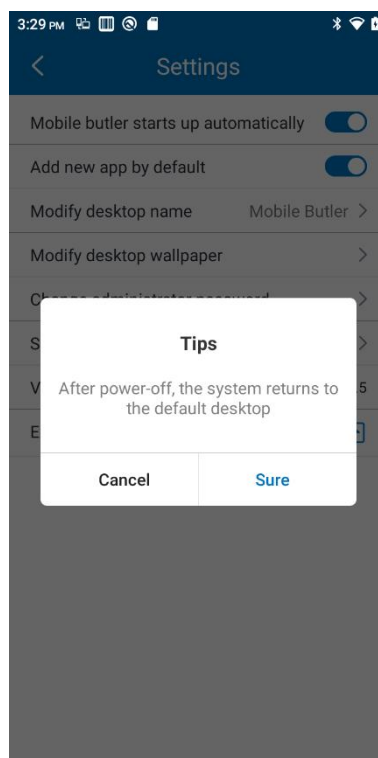


Figure 1-7 Boot self-start-off acknowledgement