

Once configure manual

directory

Once configure manual1

1.1. Introduction 2

1.2. Import 2

1.2.1. File import2

1.2.2. QR code import4

1.2.3. XML import 5

1.2.4. Relationship between file import and XML import 6

1.3. Export6

1.3.1. File export 6


1.3.2. export QR code 9

1.4. Boot import10

1.4.1. Make a default configuration package10

1.4.1. Import the default configuration package 11

1.1. Introduction

In order to implement the same model of device, this application quickly copies the configuration information of one device to another device, so that the configuration related to the two devices is identical. The configuration import operation cannot be implemented between different models of devices. Look for this icon , Enter the Once Configure interface:

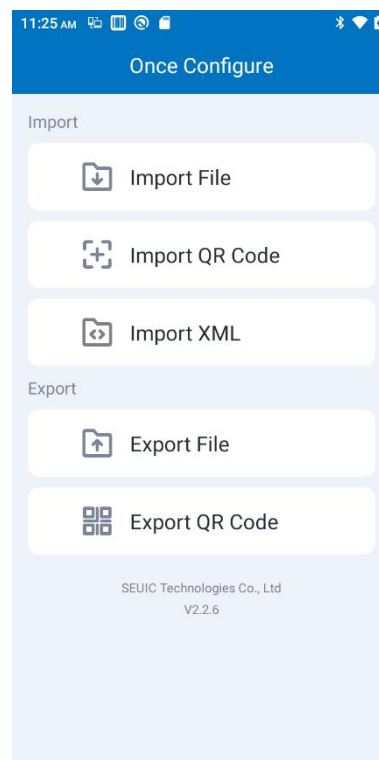


Figure 1: Once Configure Main Interface

1.2. Import

1.2.1. File import

You can put the eligible configuration compressed package in the specified directory of the external SD card. The external SD card system path is: External SD card/SysSetting/ Setinfo.tar.gz or /SysSetting/ DefSetinfo.tar.gz. (When two files exist at the same time, DefSetinfo.tar.gz is imported as a configuration package)

1) Place the configuration package (with the name Setinfo.tar.gz) in the external SD card/SysSetting directory, As shown in the image:

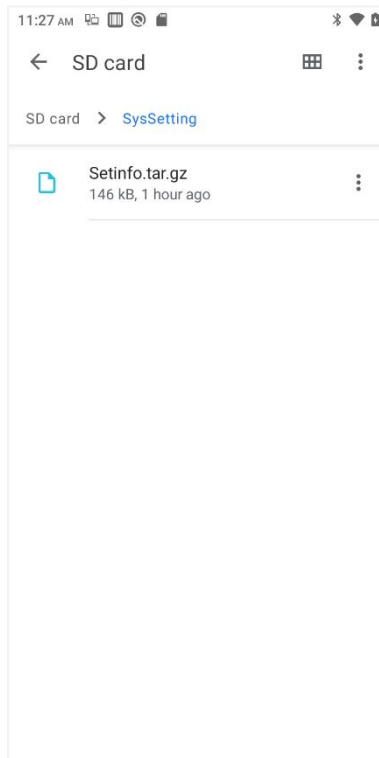


Figure 2: Configure the package directory

2) Go to the Once configure and click [Import File], The following prompt pops up, click [Confirm];

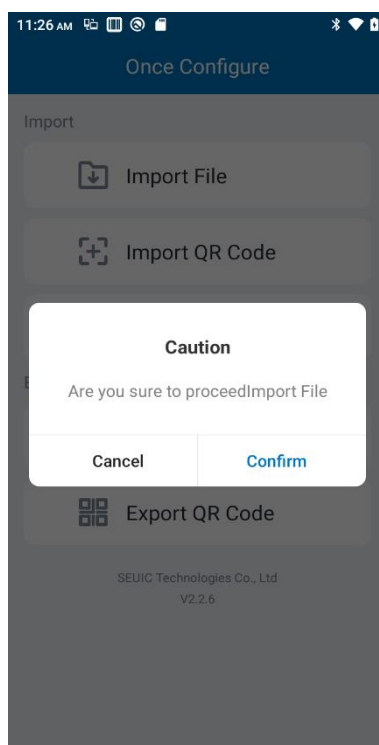


Figure 3: File import

3) After the import is successful, the file import list will pop up, click OK at the bottom, a restart prompt will pop up, and click [Now] to complete it (if you do not restart some configurations, they will not take effect immediately).

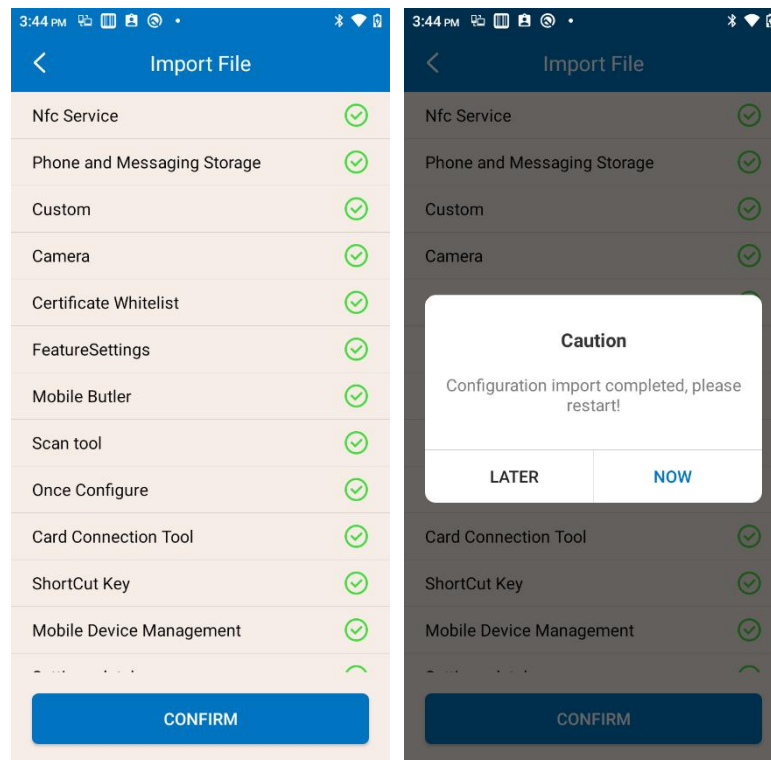


Figure 4: The configuration is imported successfully

1.2.2. QR code import

This function can realize the import of external configuration files by scanning QR codes, and you can call camera to scan other external QR codes to import configuration files.

(1) Go to the Once Configure, click [import QR code], and place the QR code to be imported into the scanning box.

(2) After the scan transmission is successful, the QR code import list will pop up, click OK, a restart prompt will pop up, and click [Now] to complete it (if you do not restart some configurations, it will not take effect immediately).

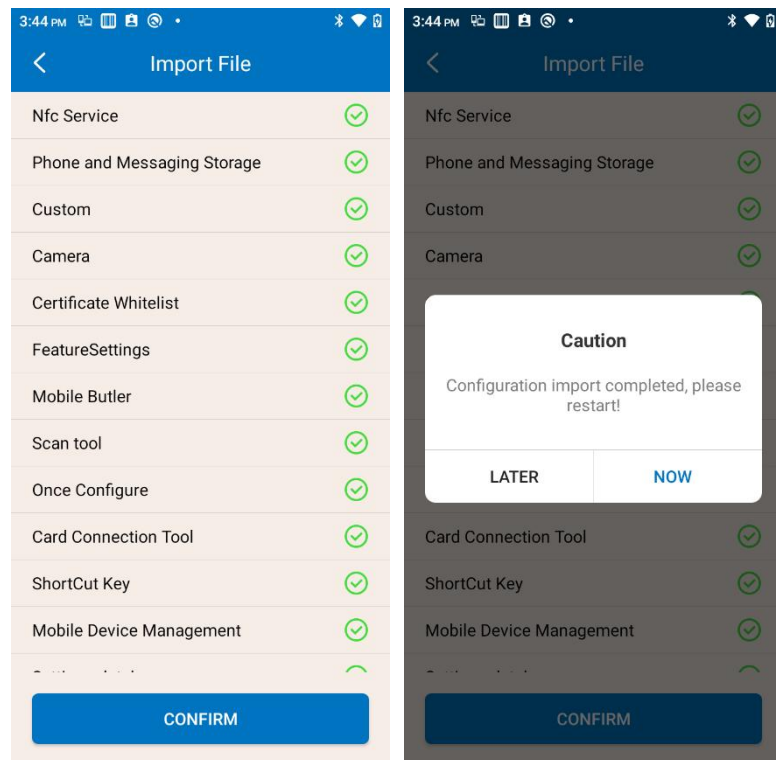


Figure 5: The QR code is imported successfully

1.2.3. XML import

(1) In URL: <http://192.168.40.182:8089/apps/index/> configure the generated XML, name the generated XML Config.xml or DefConfig.xml. and place it under the sd card/SysSettings directory.

(2) Enter the Once Configure, click [Import XML], a confirmation pop-up box will pop up Click Confirm, and the import list will be displayed successfully.

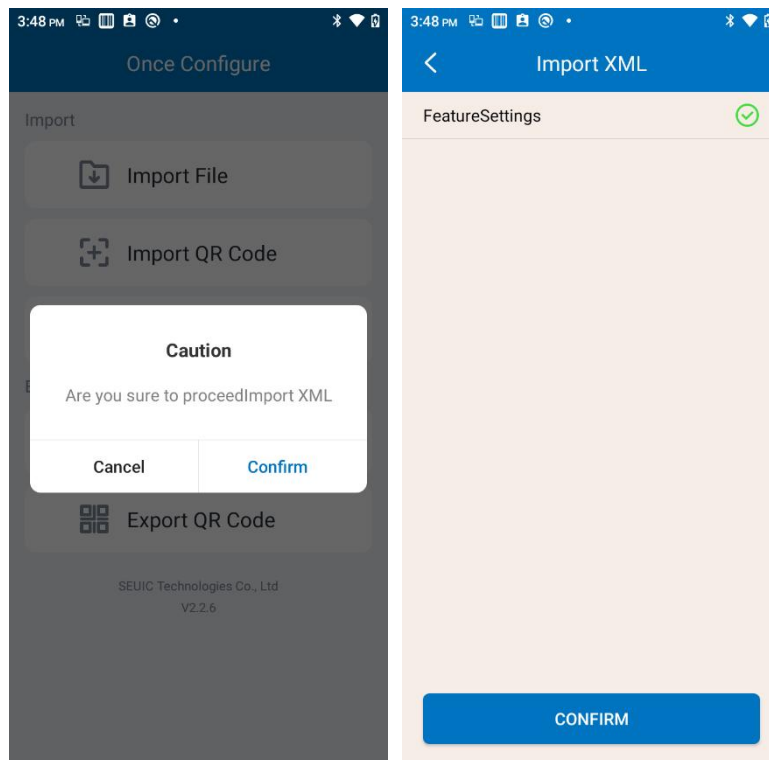


Figure 6: The XML import is successful

1.2.4. Relationship between file import and XML import

(1) When clicking " Import File ", if the imported DefSetinfo .tar.gz, DefSetinfo .tar.gz placed in the cust partition and deleted from the DefConfig .xml under cust. When clicking " Import XML ", if the DefConfig .xml is imported, the DefConfig .xml placed in the cust partition.

(2) XML and file import, after factory restoration, follow the following rules: priority query of the sd card, if the sd card has DefConfig.xml import DefConfig .xml, otherwise if there is DefSetinfo in the sd card.tar.gz import DefSetinfo .tar.gz, and delete the cust DefConfig .xml; when the sd card does not exist, query the file under the cust partition, cust exists DefConfig.xml import DefConfig.xml otherwise import DefSetinfo .tar.gz.

1.3. Export

1.3.1. File export

This function can export all configuration items in the configuration import and export tool of the local machine and can export to the directory specified by the built-in SD card or external SD card. The name of the export file is Setinfo.tar.gz. The

path to the export file is: a) External SD card/SysSetting/

b) Built-in SD card/SysSetting/

When the device has an external SD card, the file export is prioritized on the external SD card.

(1) Enter the shortcut configuration, click [Export File], as shown in Figure 7 below to pop up a confirmation pop-up box,

1) If the profile does not exist in the external SD card, it prompts "Are you sure to export the file"

2) When there is a configuration document in the external SD card, it prompts "There is a configuration document in the external storage, continuing to export will overwrite the original file, do you want to continue?"

After clicking Confirm in the pop-up box, the file export list will be displayed as shown in Figure 8 below and click OK to export successfully.

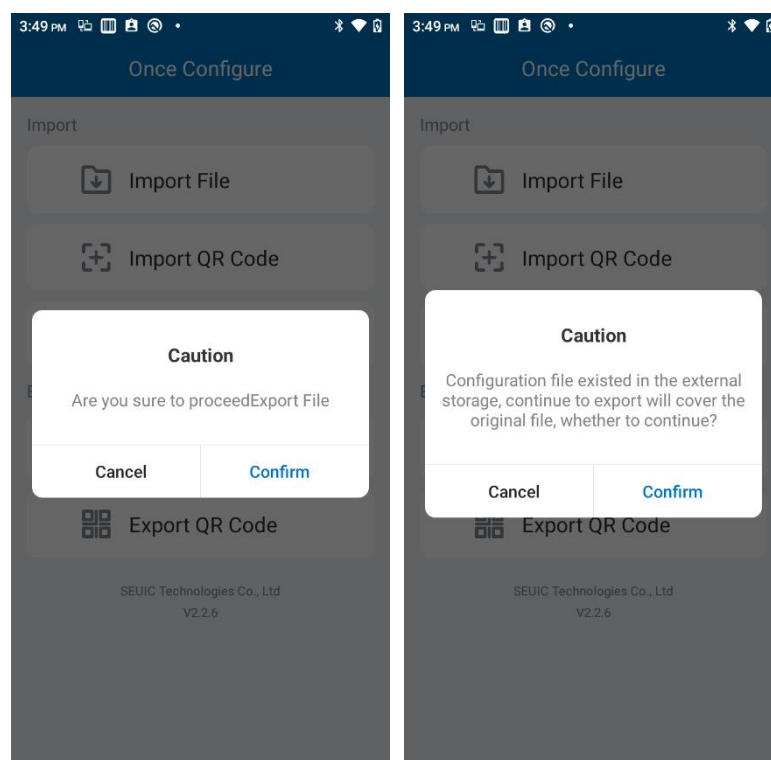


Figure 7: Export confirmation pop-up box

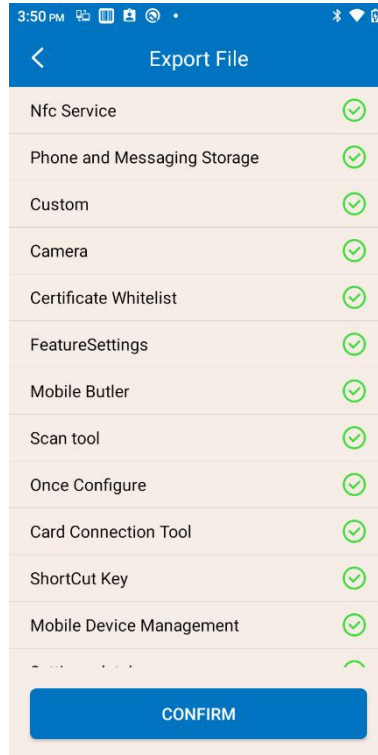


Figure 8: files export list

(2) The exported file is named Setinfo.tar.gz which can be viewed on the SD card under SysSetting:

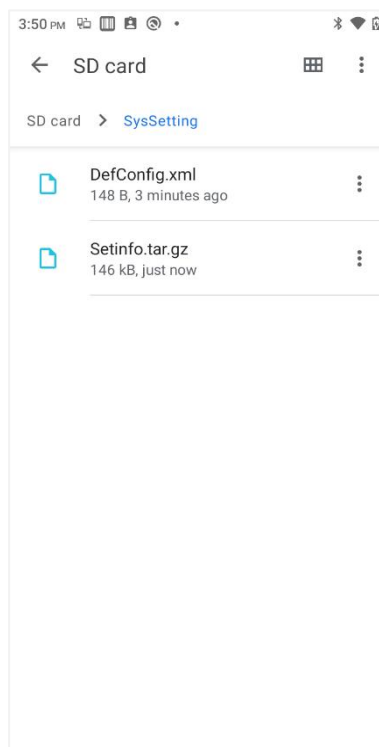


Figure 9: File export path

1.3.2. export QR code

QR code export generates a QR code, connects to the Bluetooth channel by scanning the QR code, and transmits the configuration file.

(1) Enter the shortcut configuration, click [export QR code], a prompt pop-up box will pop up, click Confirm to enter the QR code export list, the following interface indicates that the export is successful, click Confirm:

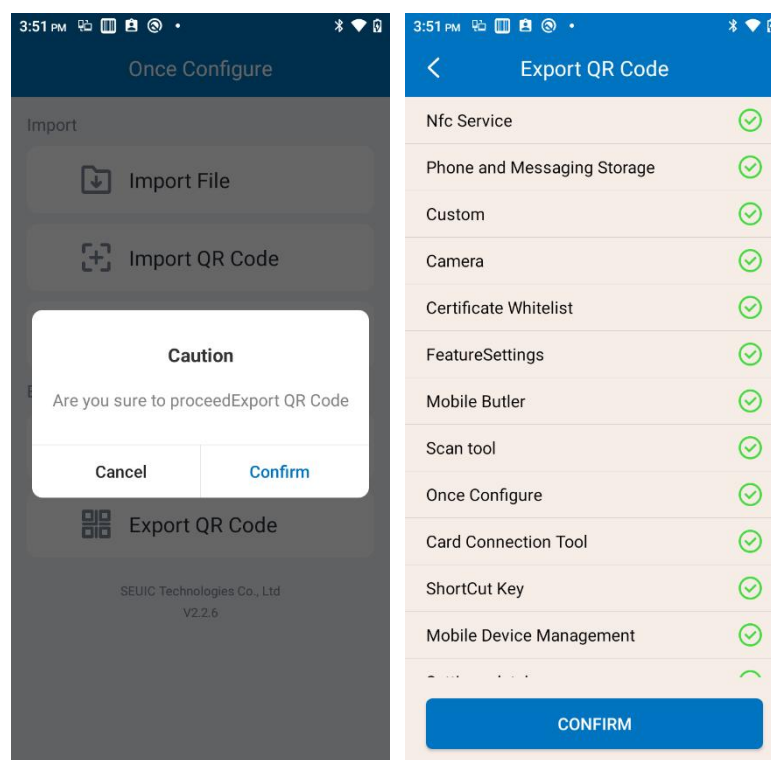


Figure 10: QR code export

(2) The generated QR code image is at the bottom of the homepage, click the bottom icon to view the QR code.

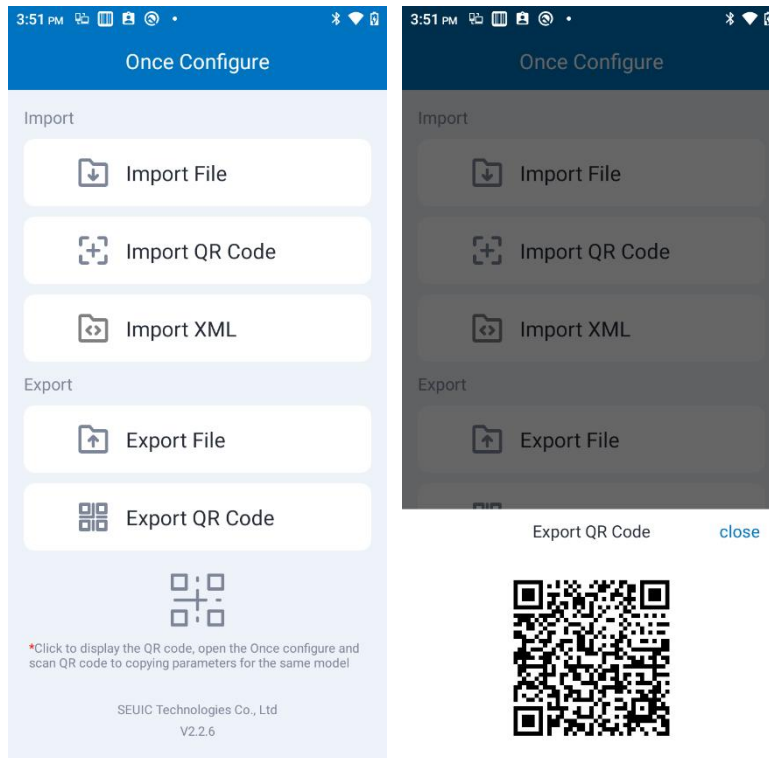


Figure 11 :QR code image

1.4. Boot import

This function allows configuration items to be configured as the default configuration of the machine.

1.4.1. Make a default configuration package

Change the name of the configuration package Setinfo.tar.gz exported using the "File Export" function to DefSetinfo.tar.gz and place it under the external SD card/SysSetting/ DefSetinfo.tar.gz path.

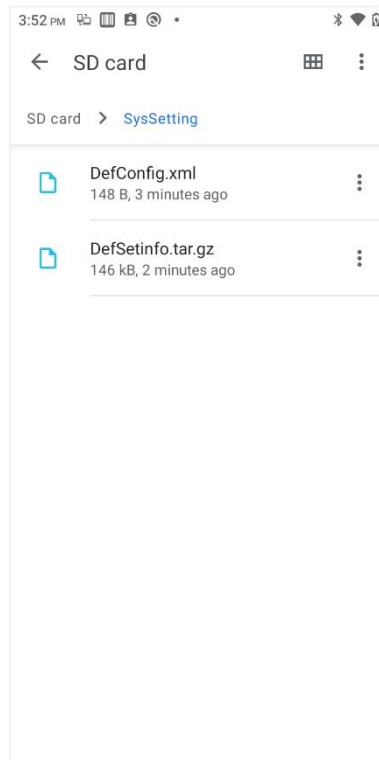


Figure 11 :Booting the Import Package

1.4.1. Import the default configuration package

- 1) In Settings/System/Reset Options, tap Factory Data Reset

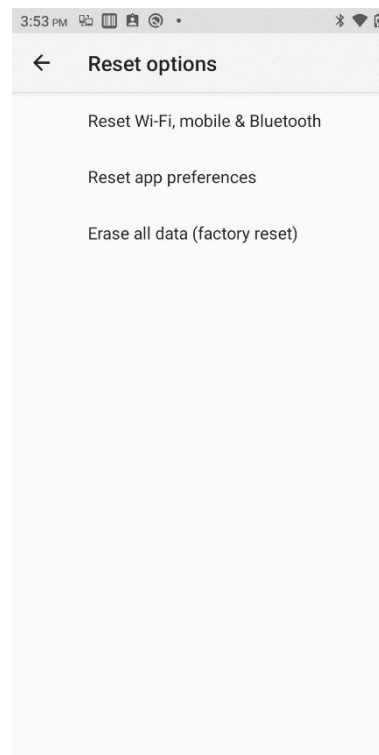


Figure 12: Factory reset interface

2) Insert an external SD card with the default configuration package into the device and boot the system. **At this time, the default configuration package has been imported into the machine, and there is no need to insert an SD card after performing a factory reset on the machine again,** The default configuration package will be imported for the first boot.

Click [Now] to complete the import of configuration(some configurations will not take effect immediately if you do not restart)

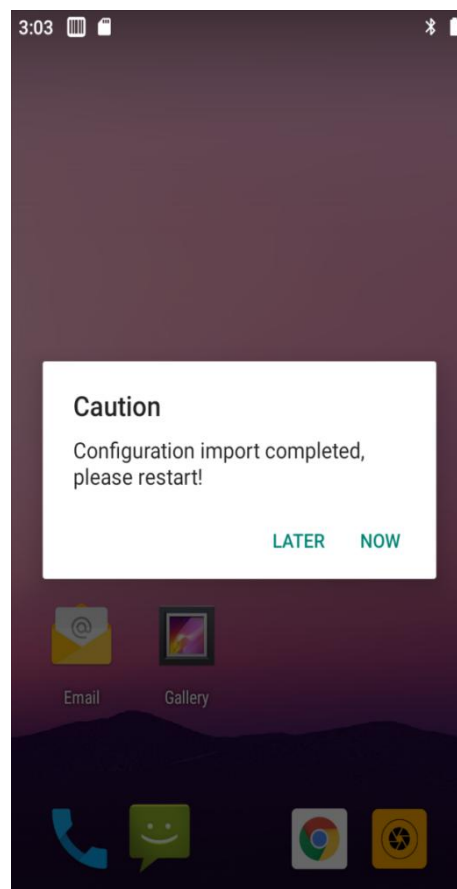


Figure 13: The boot import is complete