

Remote intercom

Product instructions for use

Version information

version number	time	stat e	A brief description	department	Change the person
V 1.0	2021/11/01	N	Use the synopsis	Product Management Department	<i>Wang Chunrong</i>

Note: The status can be N-new, A-added, M-changed, D-deleted.

* SEUIC Technology Co., Ltd. has the right to interpret this document!

catalogue

1. Product profile	3
2. Product instructions for use	3
1. How to log in to the intercom software?	3
2. How to create a channel?	4
3. How to search for channels?	5
4. How do you talk about it?	5
5. How to manage the intercom group?	8
6. How to add friends?	8
7. How to delete your friends?	10
8. How do you make a single or group call with your friends?	11
9. How do I modify my personal information?	11
10. How to exit the software?	13
3. Other setting items	14

一、Product profile

Remote intercom is based on the mobile communication network and professional service software, which can provide customers with semi-duplex cluster communication service within the coverage of mobile communication network, realize the PTT one-button intercom nationwide, and support privatization deployment

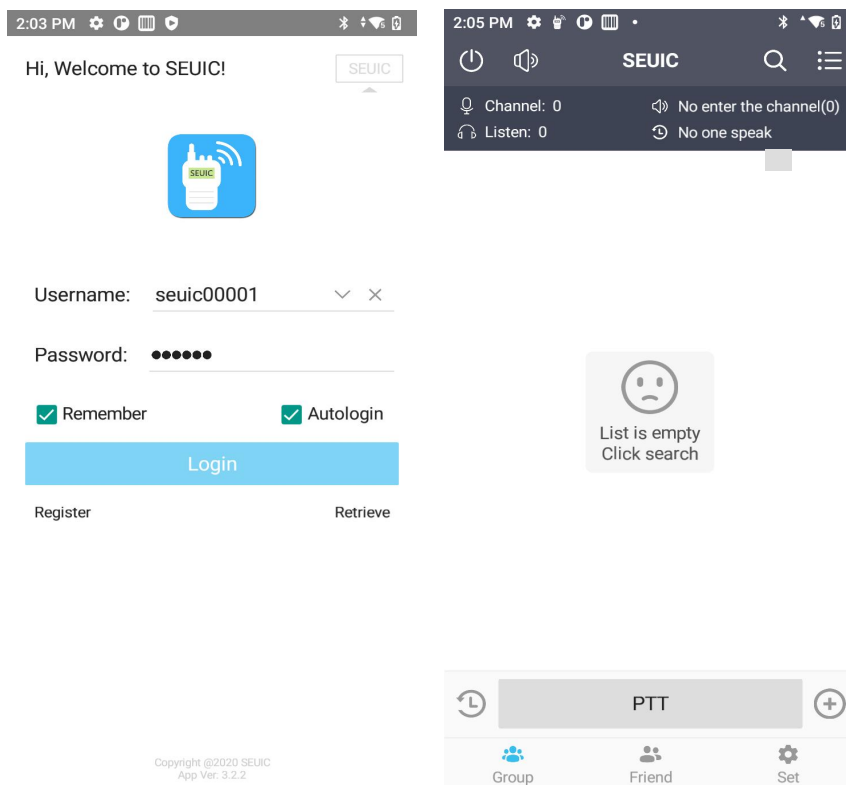
二、Product instructions for use

1. How to log in to the intercom software?

Open the Remote intercom software, enter the SEUIC Cloud login interface, see the interface shown in the figure below, enter the corresponding account at the account and password, click remember the account, and automatically log in to save the subsequent login time.

For example: test the account number

After entering the account password, click Login. After successful login, enter the intercom function interface. There are three modules in the main interface, namely: group, friends and Settings.



2. How to create a channel?

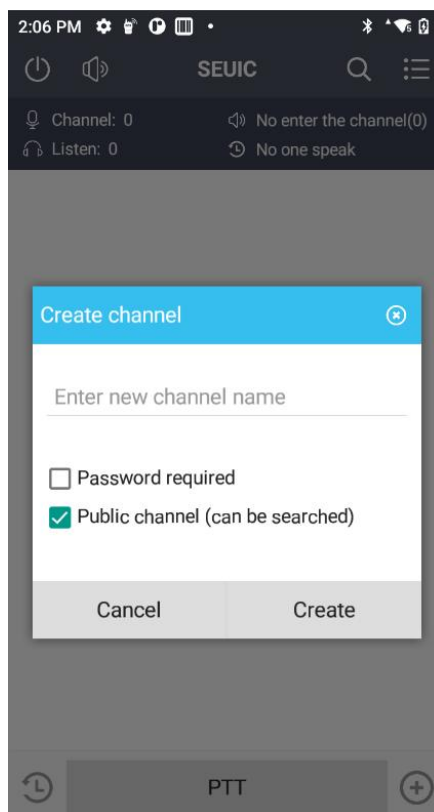
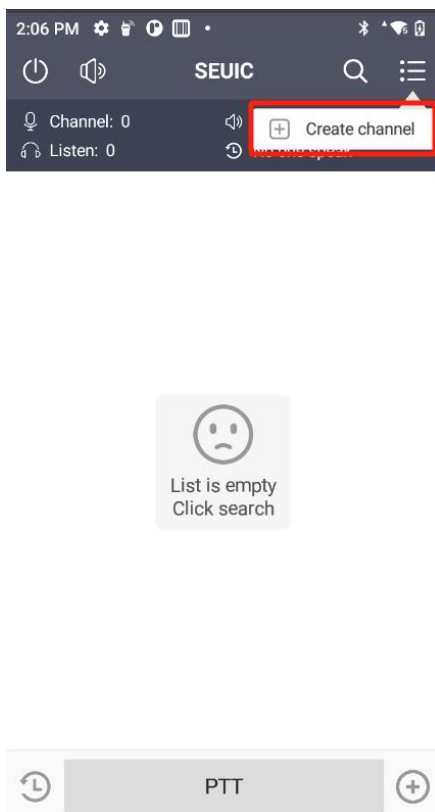
After successful login, we enter the group interface, as shown in Figure 3, click the menu bar in the upper right corner, then click Create channel, enter the channel name, and click Create. After successful creation, the channel ID will be automatically generated. Then you can enter the channel, hold the middle intercom to speak.

2.1 Create a channel password

When creating a channel, you can check the required password box. At this time, you can set the group password. After the setting is completed, others need to enter the password to enter this channel.

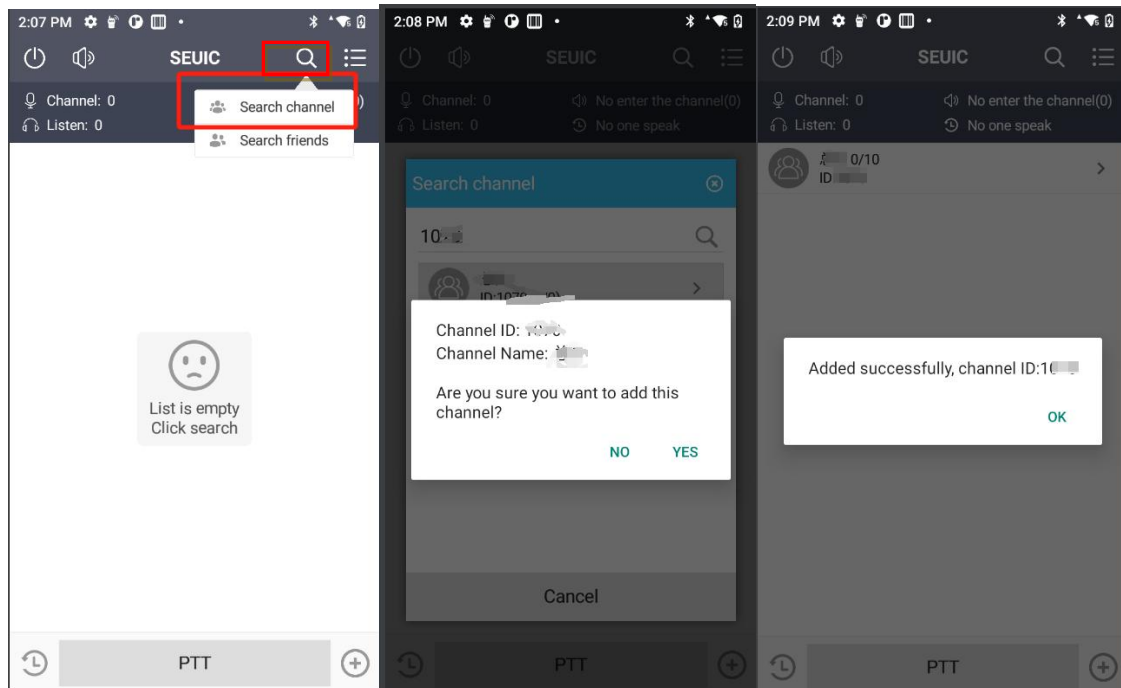
2.2 Open channel

Check the open channel, the channel can be searched by others, do not check the open channel, the created channel can not be checked.



3. How to search for channels?

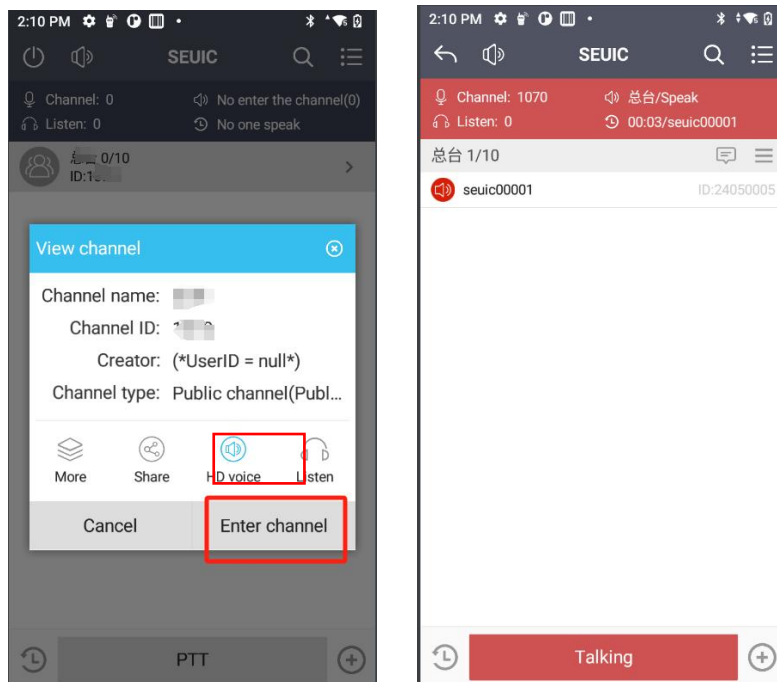
In the main interface, click the search box in the upper right corner, then click the search channel, enter the known channel name / channel ID, for example: enter the desk / 1070, and then display the relevant channel, click this channel, pop up confirmation box, click OK, add the channel, prompt to add successfully.



4. How do you talk about it?

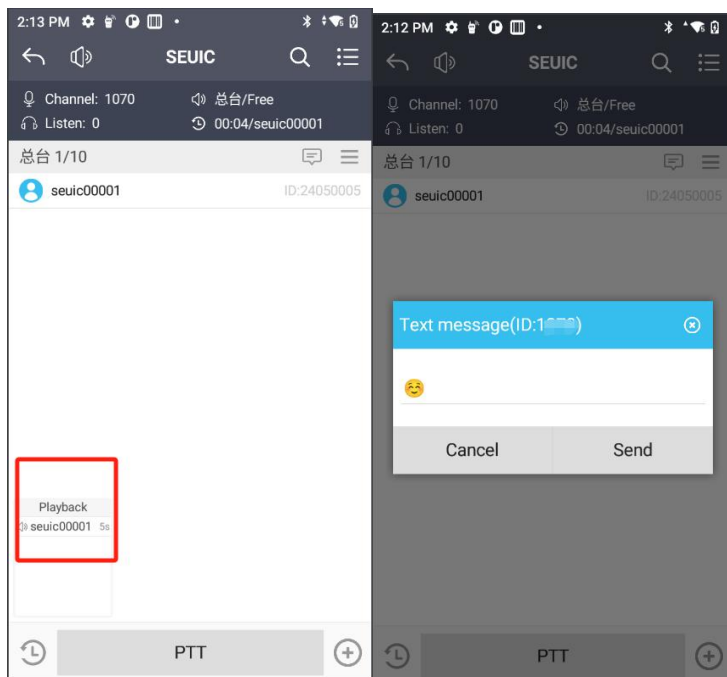
4.1 Enter / listen to the channel

In the group interface, when you see different channels, click on the channel you want to enter, and then pop up the relevant information of the channel, click to enter the channel, after entering the channel, you can have a intercom. In the popup channel information, you can also choose to listen to the channel (listening channel: means not entering the channel, but can be heard in the channel)



4.2 Intertalk

At the bottom of the channel interface, click hold the intercom, intercom left is historical playback, click on the history visit can view the channel past the voice, hold the intercom right is other functions, click +, can send the information such as text pictures, in the upper part of the channel name, click the message button, can view the text message record.



5. How to manage the intercom group?

On the pop-up channel information interface, click more options to see the following content:

Management channel: the created channel can change the channel name, set the channel password, set other properties of the channel, such as open channel, HD voice, member management, channel announcement, word ban mode, dissolve / cancel the channel.

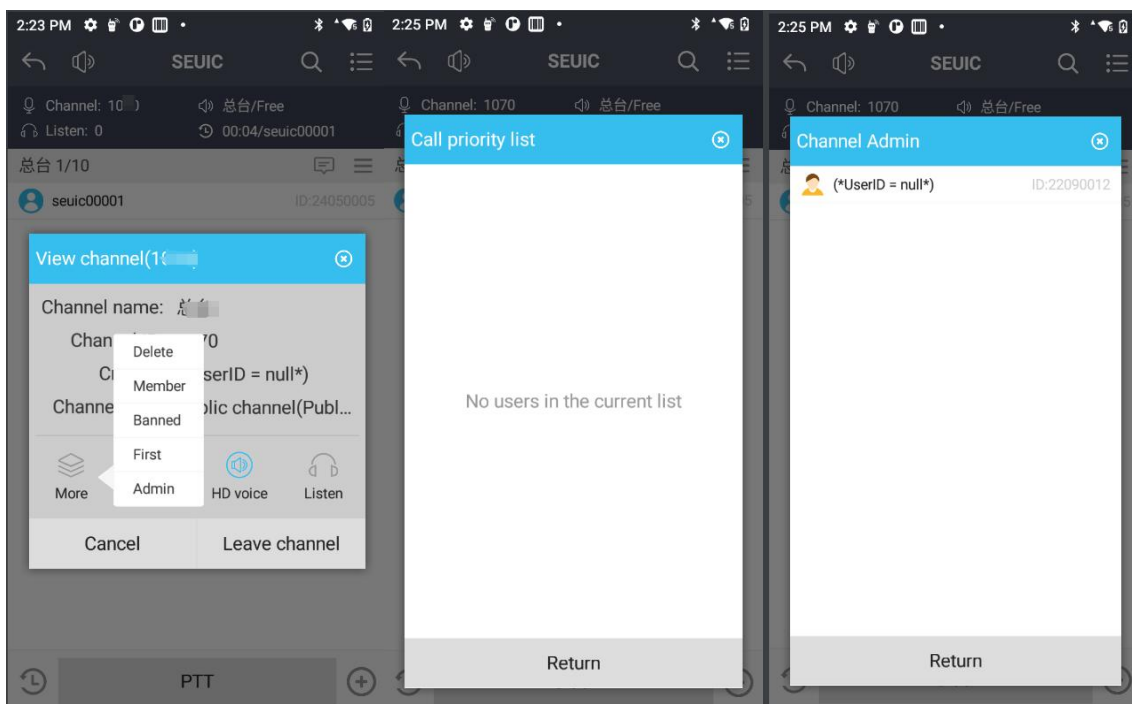
Delete channel: Delete the channel so that the channel does not appear in the group.

Member list: you can manage members, including forbidden users, users add administrator attributes, modify nicknames, etc

Forbidden words list: view the banned members.

Priority list: view the members with a higher voice (who can interrupt).

Only the creator or administrative rights can manage the channel and members, and other people can only view the relevant content.



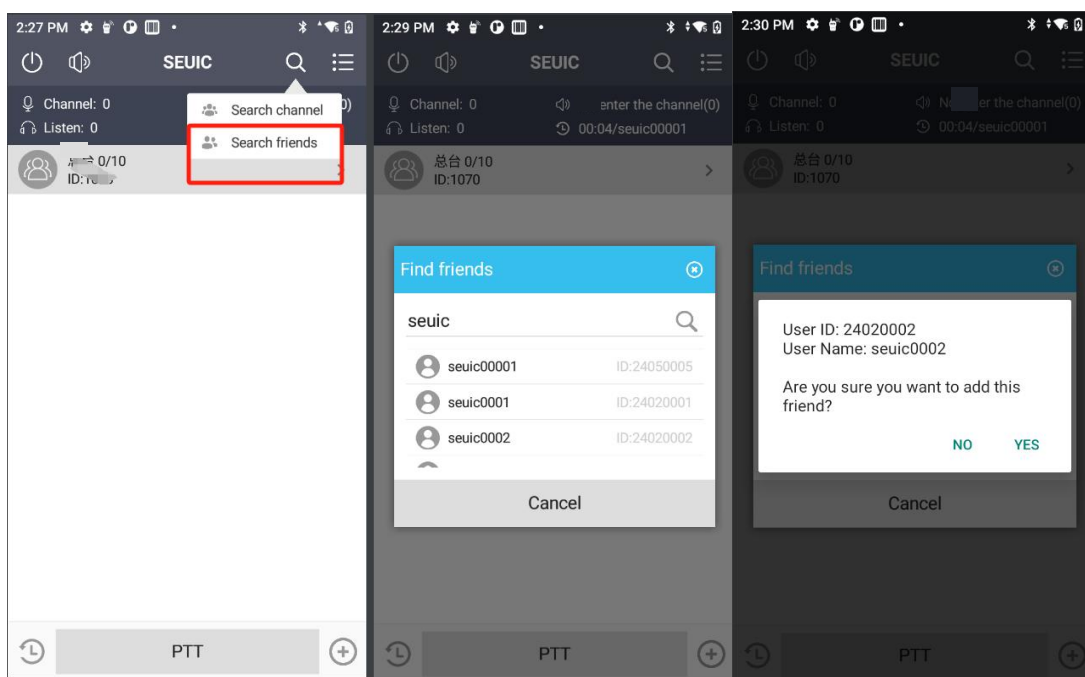
6. How to add friends?

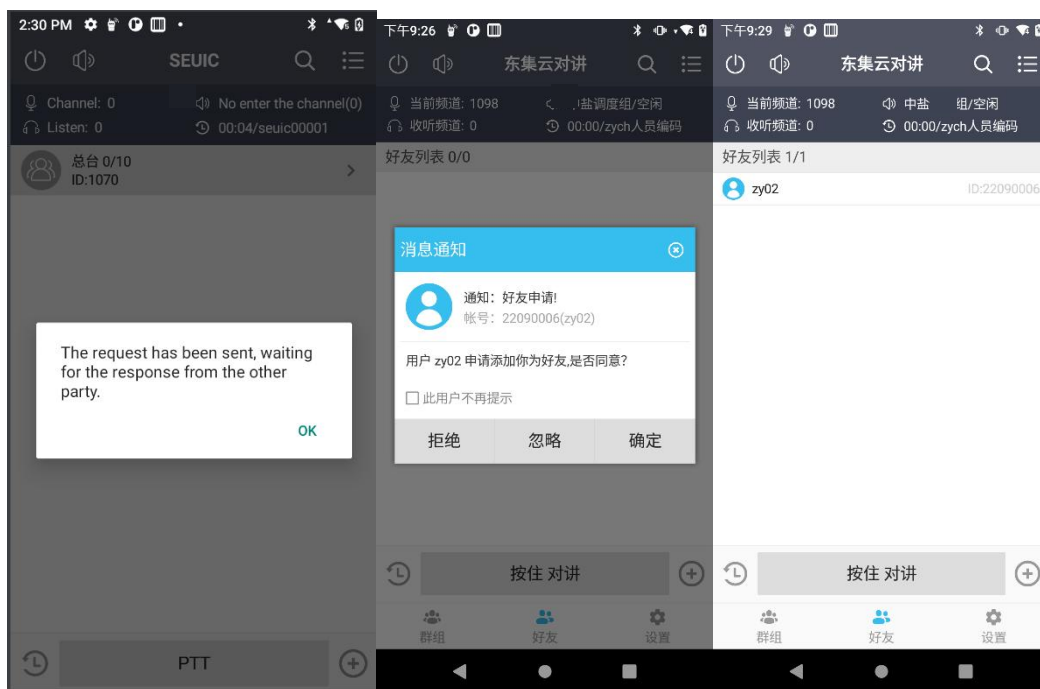
6.1 Send a friend request

In the group and friends interface, click the search box in the upper right corner, then click Find Friends, enter the user name / user ID, click search, then search to find the other party member, then click the member, confirm to add the other party as a friend, click OK, and wait for the other party to respond.

6.2 Agree to the other request

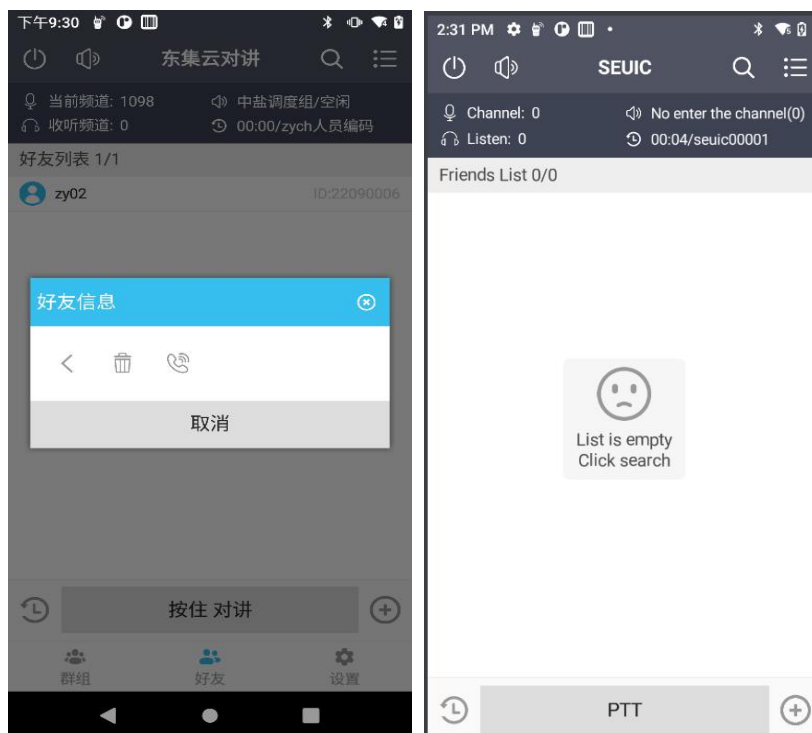
When the other party initiates a friend request, you can see a friend application message notification, and then you can choose to refuse, ignore, determine, three options, when you choose to agree, you can view the friend information in the friend list.





7. How to delete your friends?

In the friend information list, click the friend, click the delete button, click OK, to delete the friend.



8. How do you make a single or group call with your friends?

In the friend information list, click the friend and click the phone button, you can see three call functions:

Single call friend: is to establish a temporary channel, and send an invitation, after the other side agrees, you can have a double conversation.

Group call friends: is to invite friends into your channel to talk.

Double call: the difference between this function and single call friend is that single call friend is in the channel, when two friends have 1V1 call.

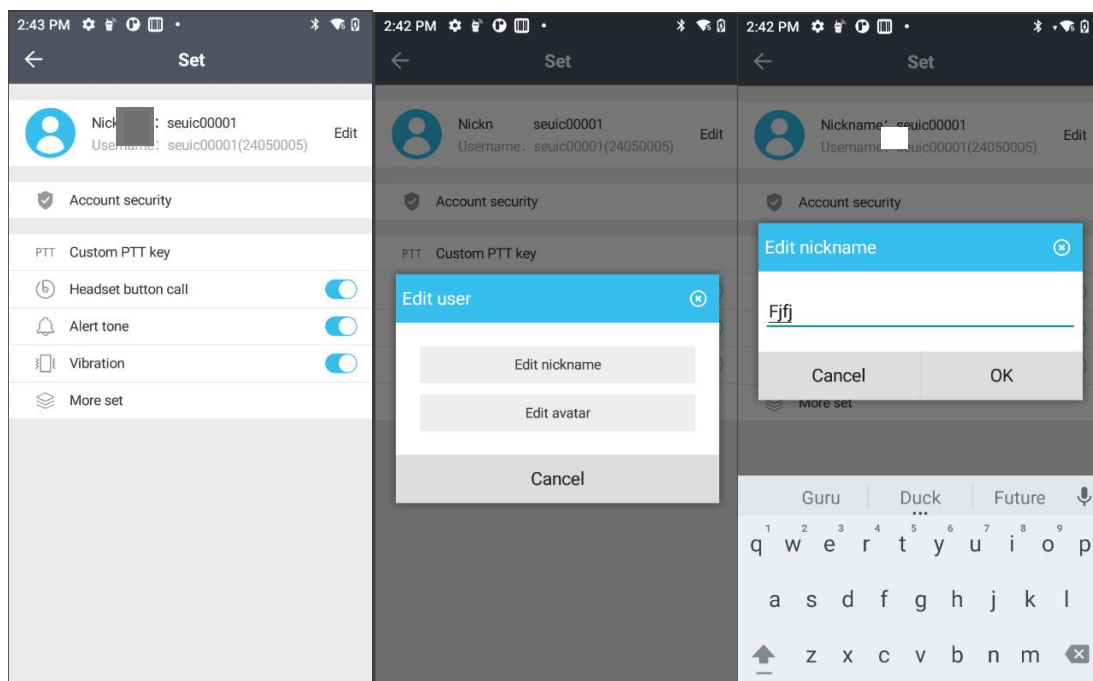
9. How do I modify my personal information?

9.1 Modify the nickname

Click the Settings interface to enter the personal information, click Edit, you can choose to edit the nickname, enter the required nickname, click OK, modification, can be viewed in the channel and friends.

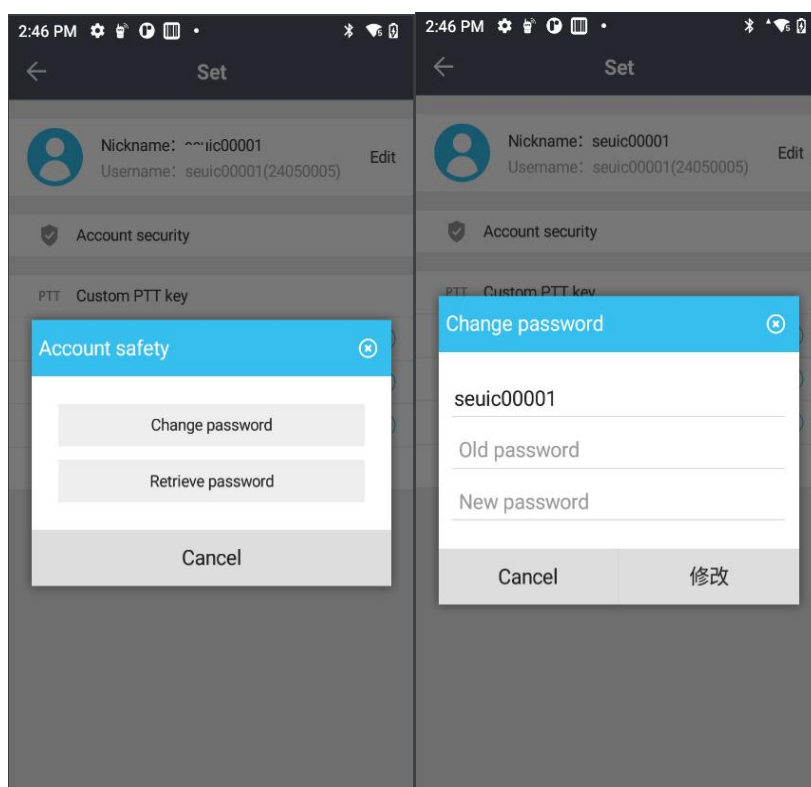
9.2 Modify the avatar

Click the Settings interface to enter the personal information, click Edit, you can choose to edit the profile picture, select the required profile picture, click OK, modify the complete, can be viewed in the channel and friends.



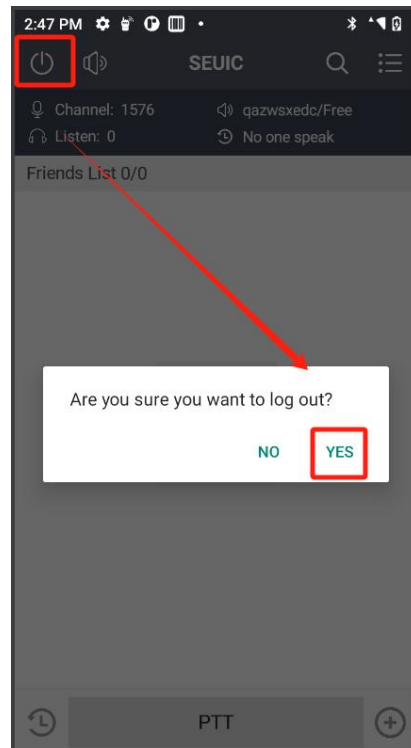
9.3 Change the password

In the Settings interface, click the account security Settings, click to change the password, enter the old password and a new password, click to modify the complete, and then log in again.



10. How to exit the software?

In the main interface, click the power style button in the upper left corner, and click OK to exit to the login interface.



三、Other setting items

Set the item	Set details
Custom PTT Jian	Set the intercom physical button, which can be set as the PTT intercom button of the device
Headphone button intercom	Talk about it by clicking on the headset button
Intertalk prompt sound	Switch holds down the sound of the intercom
Intertalk vibration tips	Whether the switch vibrate during intercom
Custom intercom cue sound effect	Set up the prompt sound effect for yourself and each other
Microphone noise reduction	Select the microphone noise reduction mode
Picture and screen management	Speaking within the channel, you can adjust the voice size of others speaking
The screen has the default rotation direction	Adjust the direction of the intercom software screen rotation: including the landscape portrait screen, whether inverted
The desktop displays the suspended PTT button	Display the floating button on the desktop, and click on it to speak correctly
Long background online	Ensure that the application background continues to run
The default parameters do not require modification	

