

SEUIC Common Settings
Product instruction manual

Contents

| | |
|--------------------------------|----|
| I. Product Introduction | 3 |
| II. Product description | 3 |
| 1. Target users | 3 |
| 2. Application scenarios | 3 |
| 3. Compatible devices | 3 |
| 4. Feature manifest | 3 |
| III. Operation | 4 |
| 3.1 Quick switch | 4 |
| 3.2 Quick settings | 5 |
| 3.2.1 Scan settings | 6 |
| 3.3 Check Info | 12 |

I. Product Introduction

Integrate common configuration items in one portal, no need to set them separately through system-related options, convenient and efficient.

II. Product description

1. Target users

Users who use SEUIC Android handheld devices for data collection.

2. Application scenarios

The customer manages the device and only supports the configuration of some common basic setup functions.

3. Compatible devices

Our Android handheld products.

4. Feature manifest

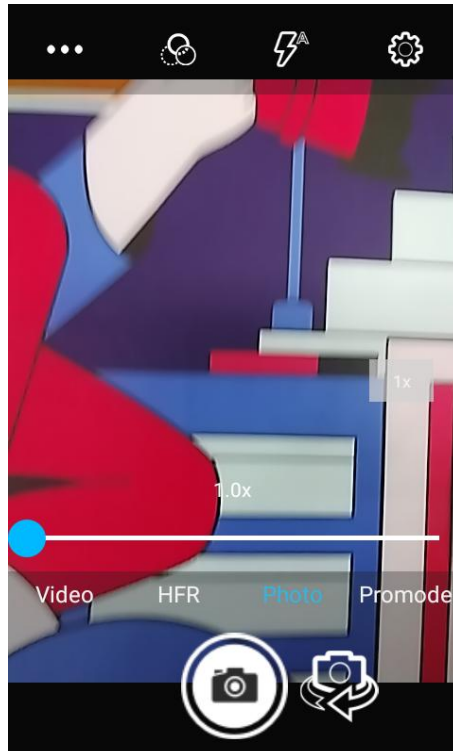
| module | Introduction to the feature |
|----------------|-----------------------------|
| Quick switch | 1. camera |
| | 2. Flashlight |
| Quick settings | 1. Scan settings |
| | 2. WiFi settings |
| | 3. GPRS settings |
| | 4. Blue settings |
| | 5. Sound settings |
| | 6. Display Settings |
| | 7. Typewriting |
| | 8. Date setting |
| | 9. App Management |
| Check info | 1. Flow usage |
| | 2. About Mobile Phone |

III. Operation

3.1 Quick switch

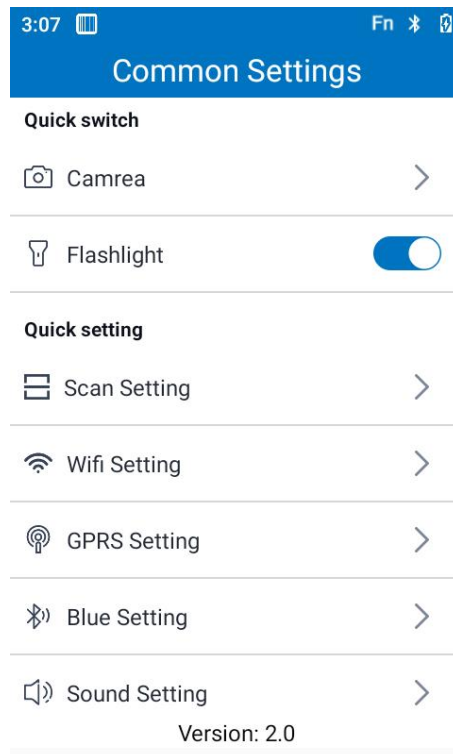
Camera

Click the Camera button to quickly open the system camera to take pictures;



flashlight

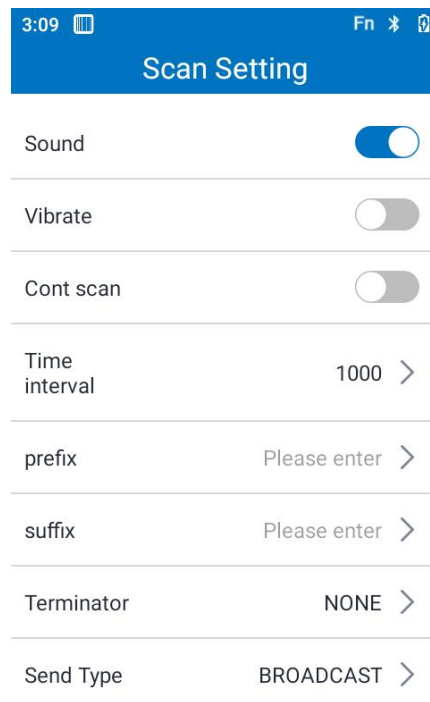
One key to turn on or off the system flashlight function, which can record the status of the last on/off;



3.2 Quick settings

Scan settings

Click Scan to enter the scan settings interface and configure the relevant parameters of the scanning tool, such as: scan tone, vibration prompt, continuous scan and other parameters.



3.2.1 Scan setting

Sound

Turn on/off the sound for scanning barcodes。

Vibrate

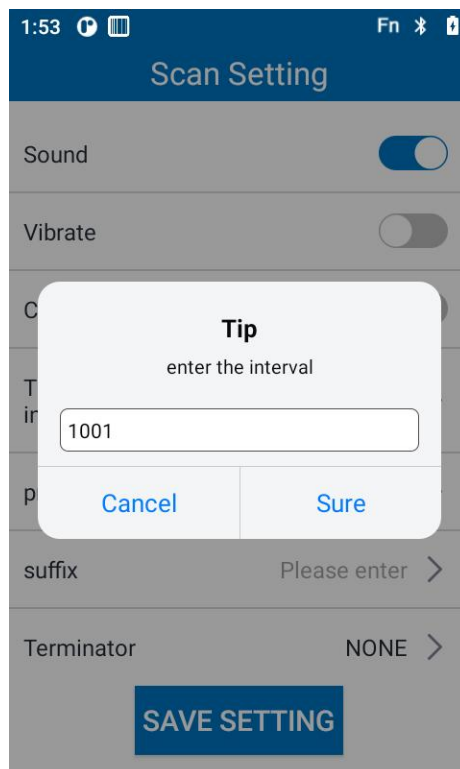
Turn on/off the vibrating prompt for scanning barcodes.

Cont scan

Turn on/off whether to continuously scan barcodes.

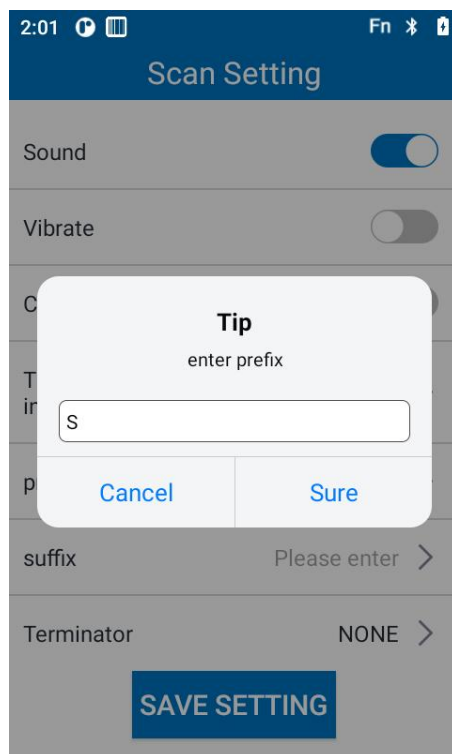
Time Interval

When you enable continuous scan mode, you need to configure the time interval, which is at least 1 millisecond, and only the number can be entered when configuring the time interval.



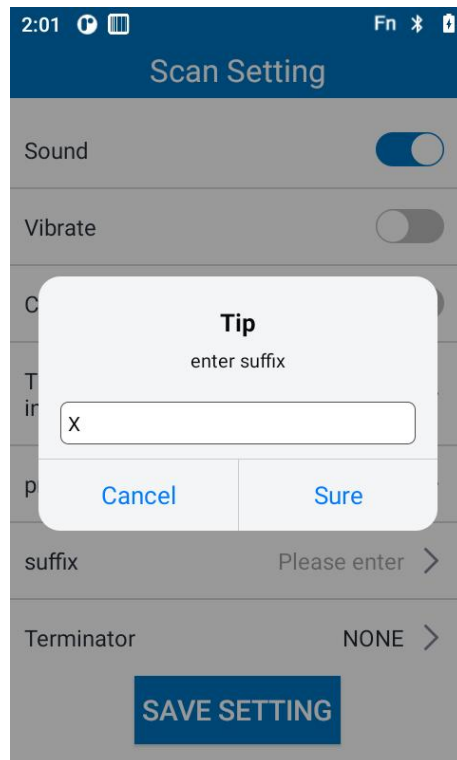
prefix

The prefix is to add characters before the barcode after scanning the barcode, such as: the configured prefix is S, the scanned barcode is 123456, then the final output barcode is S123456



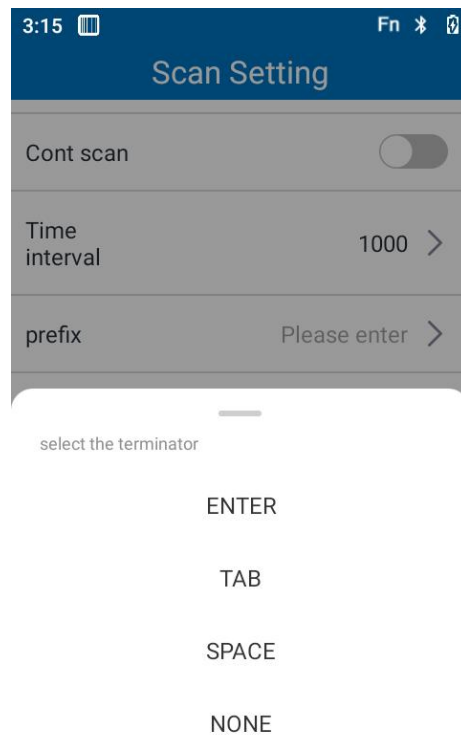
suffix

The suffix is to add characters after the barcode is scanned after the barcode, such as: the configured suffix is X, the scanned barcode is 123456, and the final output barcode is 123456X



Terminator

After configuring the barcode data sent by scanning, add the ending character for the customer App to make data judgment, and the optional ending characters are ENTER, NONE, TAB and SPACE.



Send type

At present, there are four barcode sending methods, namely:

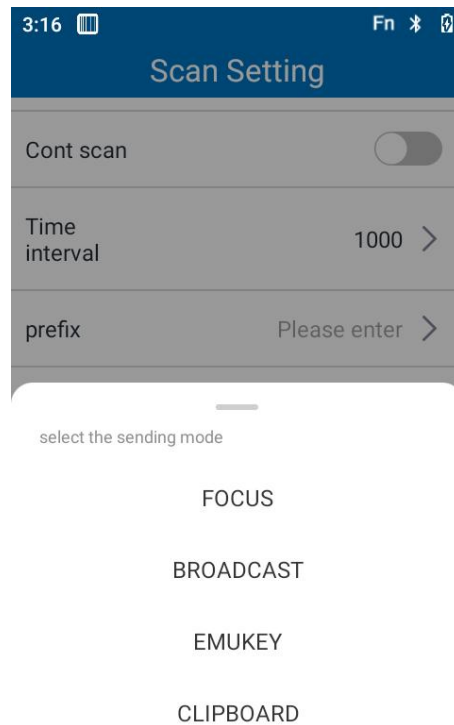
(1) Focus input: Enter the barcode data collected by the device into the cursor location.

(FOCUS)

(2) Broadcast method: send the barcode data collected by the device to the third-party application in the form of broadcasting. (BROADCAST)

(3) Analog keyboard: collect barcode data in the form of keyboard input and send it to focus. (EMUKEY)

(4) Clipboard: Copy the barcode data collected by the device on the clipboard and paste it in the application. (CLIPBOARD)



Scan action and Scan key

Configuration is only required when broadcasting is selected;

The broadcast name and key value are the most important part of broadcast reception, and this configuration needs to be consistent with the broadcast name and key value monitored in the application (if you do not know, you need to consult with the developer)

3:18

Fn

Scan Setting

| | |
|---------------|---|
| Cont scan | <input type="checkbox"/> |
| Time interval | 1000 > |
| prefix | Please enter > |
| suffix | Please enter > |
| Terminator | ENTER > |
| Send Type | FOCUS > |
| ScanAction | com.android.server.scan nerservice.broadcast > |
| ScanKey | scannerdata > |

Additional items for quick settings

Only click the relevant item settings to quickly jump to the relevant settings interface in the settings, such as WIFI settings, Bluetooth settings, sound settings, display settings, etc.

3:19

Fn

<
Wi-Fi

Use Wi-Fi ☒

DIRECT-3U-honor

FOROVERSEA

RuiXiang

SOFTWARE

chen5G

chen5G_5G

twwin

3:20

Fn

<
Connected devices

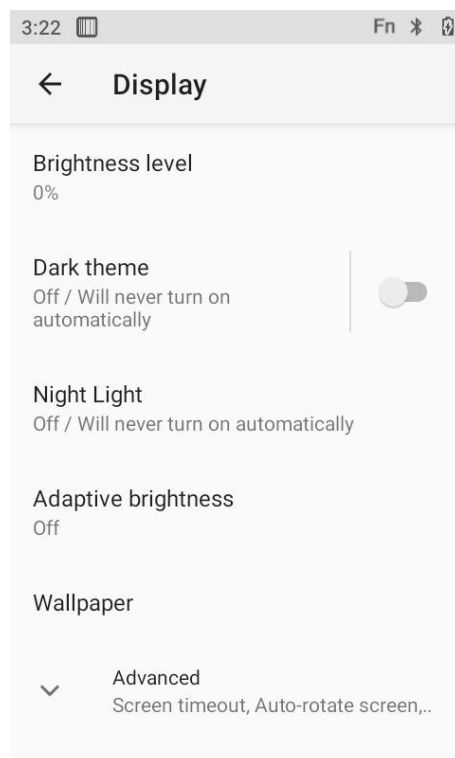
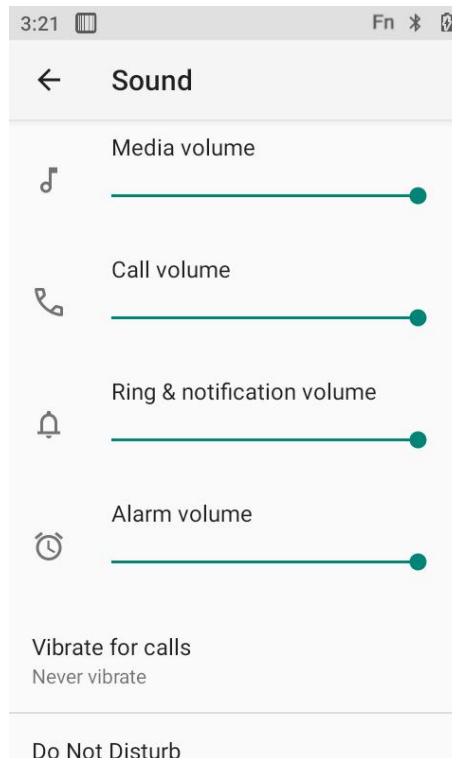
OTHER DEVICES

USB
File transfer

+
Pair new device

Connection preferences
Bluetooth, NFC

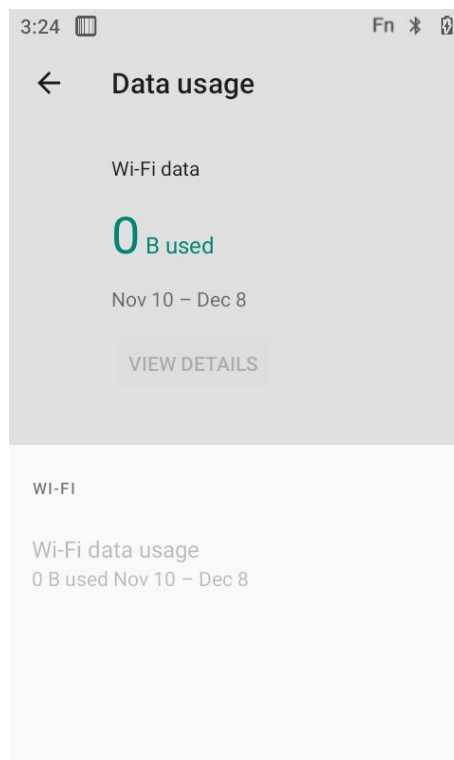
Visible as "Wooscan 8000" to other devices



3.3 Check info

Traffic usage

Click [Traffic Usage](#) to quickly jump to the Traffic Usage Details page.



About phone

Click [About phone](#) to quickly set up the interface of the phone to view information about the device.

