

Industrial Browser

Product user manual

Version information

version number	time	state	Brief description	department	Change the person
V1.0	2023/04/06	N	new document	Research and Development Center	
V1.1	2023/04/21	M	revise	Product Management Department	
V1.2	2025/06/17	M	Remove the activation function	Product Management Department	
V2.0	2025/07/15	M	Version iteration, UI and function upgrade	Product Management Department	

Note: The status can be N-new, A-added, M-changed, D-deleted.

* SEUIC Technologies Co., Ltd. has the right to interpret this document finally!

catalogue

A. Product Introduction	3
B. Product description	3
1. Application scenarios	3
2. Compatible devices	3
3. List of functions	3
C. Operation and use	4
1. Registration activated	4
2. Visit the website	4
3. White list	5
4. Favorite	6
5. Floating button	6
6. Sweep test	7
7. Web functionality	8
1.1 Set the home page	9
1.2 Add to favorites and open favorites	9
1.3 Open the history	10
1.4 Add to Home Screen	11
1.5 Switch tabs	11
1.6 Set the font size	12
1.7 Set the screen brightness	13
1.8 Full screen display	13
1.9 Return to the browser home page	14
8. Browser menu	14

A. Product Introduction

Industrial Browser is a pure version of multi-functional browser developed by SEUIC. It supports page adaptation, hover operation button, web program call scanning ability, etc., ensures data security, simple operation mode, etc., suitable for most web applications, perfect docking SAP, Oracle, Fuller and other systems.

B. Product description

1. Application scenarios

Access the web business system through the browser.

2. Compatible devices

SEUIC Android version handheld terminal.

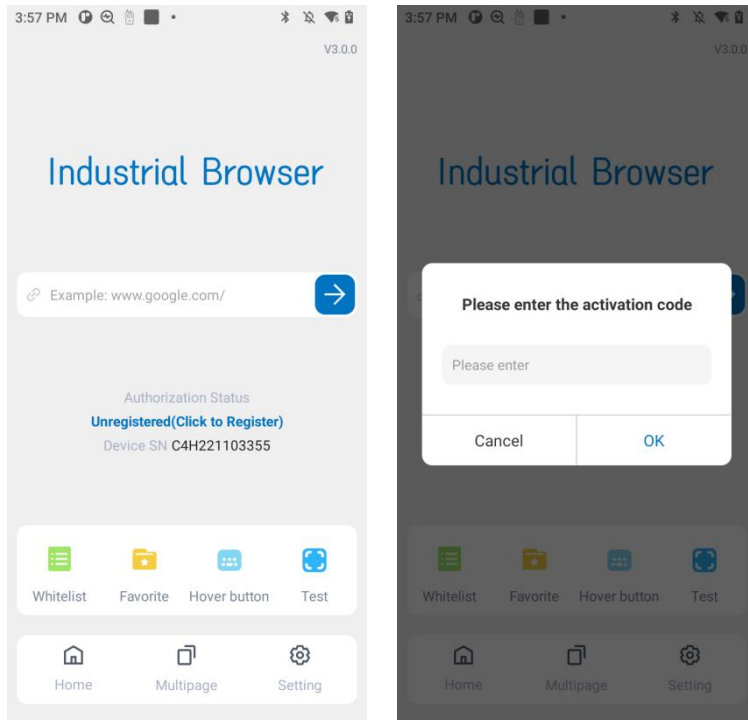
3. List of functions

module	Function description
Activate and try it out	The relevant functions of the old version of industrial browser need to be activated. The unactivated device has only 30 days of trial time, and the device cannot use the industrial browser after the trial time. The new version V2.6.4 and above require users to activate the use by their mobile phone number
Web access	Enter the url and click to access the relevant page
white list	When the whitelist is enabled, the websites not on the whitelist are prohibited from being accessed. The whitelist websites can be set with fuzzy matching or exact matching. To enter the whitelist interface, you need to verify the password. If no password is set, you need to set the administrator password first
favorite	The bookmark function is used to bookmark the specified url address for quick jump
Floating button	Supports the use of common shortcut hover buttons such as refresh, Enter, delete, return and custom
sweep test	Provide barcode scanning, RFID scanning, fingerprint and signature entry function test page, to verify the test WEB program directly call support system level functions
Web functionality	Common web browsing shortcuts such as refresh, set as home page, add to favorites, history, add bookmark to home screen, switch tabs, set font size, set screen brightness, full screen display and so on

C. Operation and use

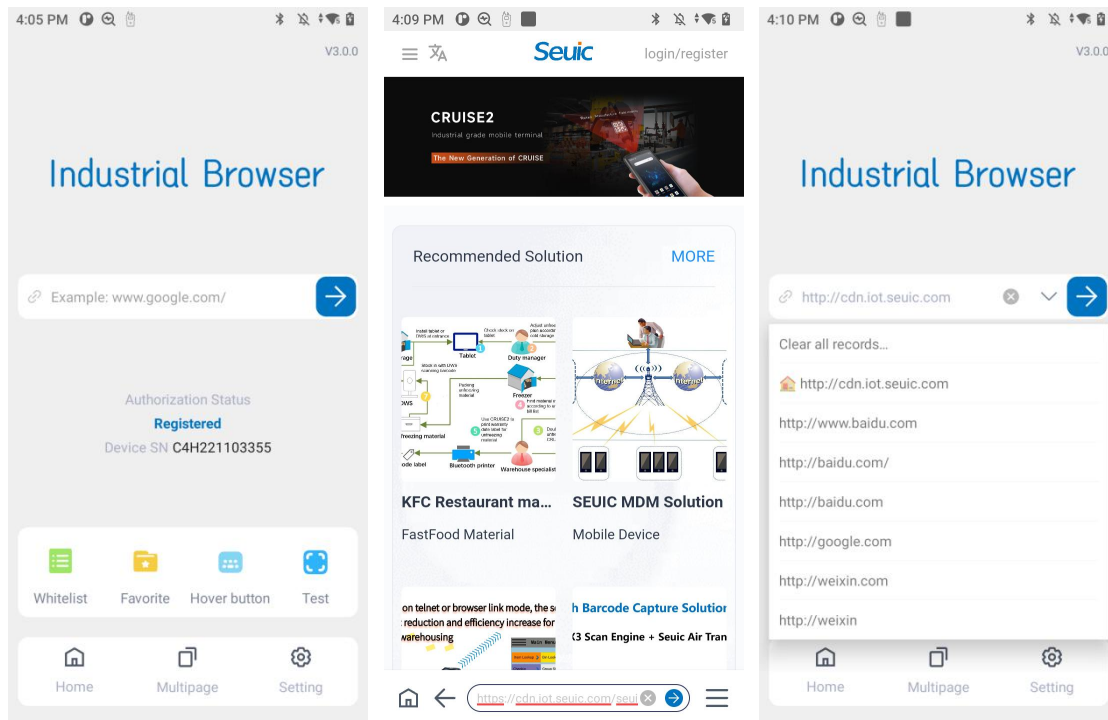
1. Registration activated

Activation is required for first-time use or after restoring to factory settings. Please provide the device SN to SEUIC technicians for activation before use.



2. Visit the website

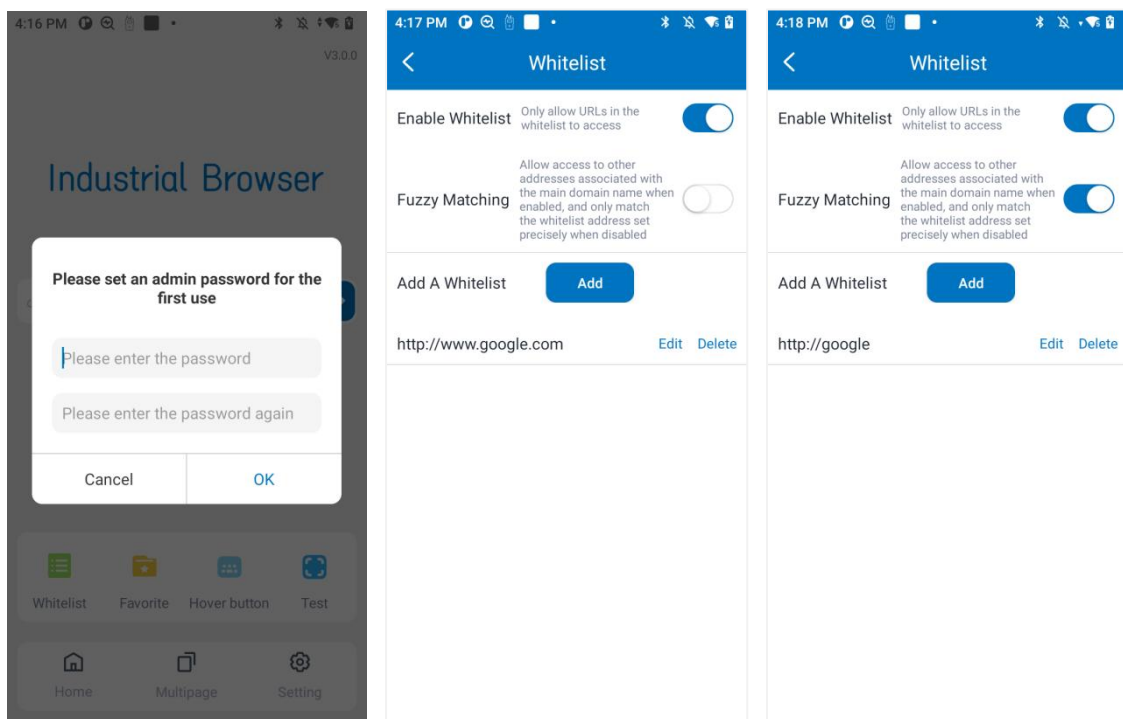
Enter the web address you want to access in the input box, and click the access button to enter the corresponding web page.



- If there is an access history, you can click the drop-down button on the right of the input box to pop up the history record for quick access, and you can manually clear the history record.

3. White list

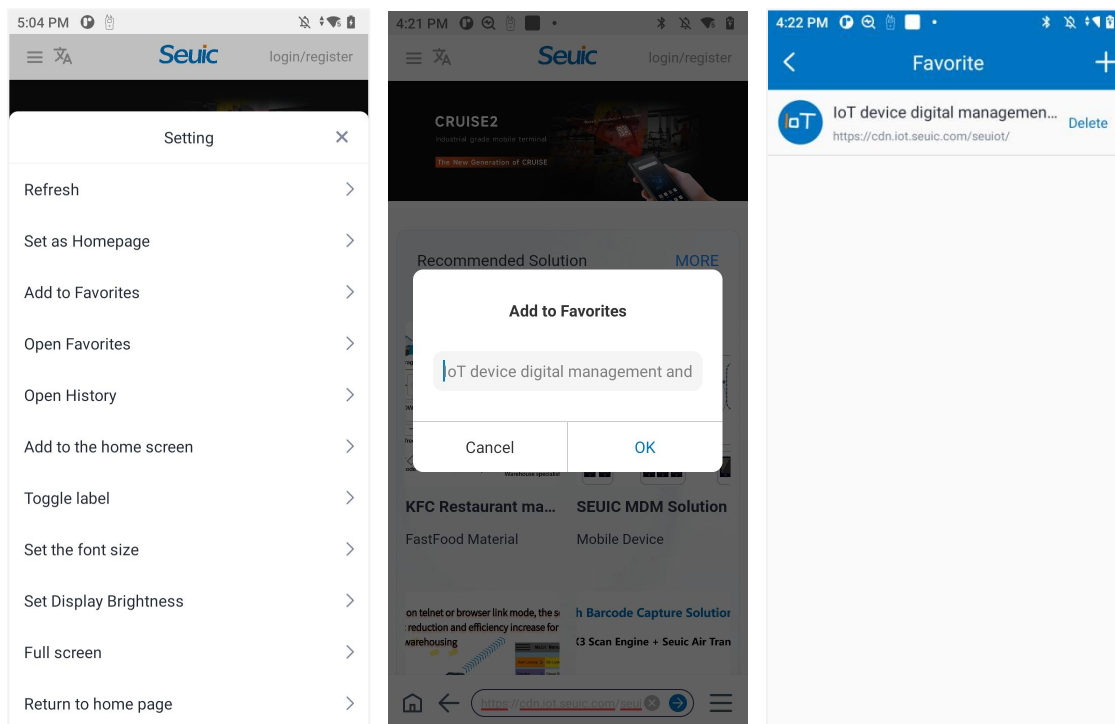
The whitelist controls which websites can be accessed. When activated, it blocks all non-whitelist sites. First-time users must verify their password when entering the whitelist interface. If no password is set, the system will prompt you to configure one. The whitelist remains disabled by default but can be manually enabled by clicking the "Add" button in the whitelist settings.



- Use the whitelist for the first time: The administrator password is required. Enter this administrator password when you want to enter the whitelist later.
- Enable whitelist: By default, it is disabled. If enabled, only the websites in the whitelist list are allowed to be accessed. Please note that if the whitelist list does not set the website but the enable whitelist button is enabled, all websites cannot be accessed.
- Fuzzy matching: When enabled, it allows access to other addresses associated with the main domain name. When disabled, it only matches the white list addresses set by precision. When fuzzy matching is enabled, new white list addresses should only contain the domain name subject. For example, if you want to access Baidu, you can only fill in baidu.
- White list list: Click the add button to fill in the accessible url, after which you can edit and delete.

4. Favorite

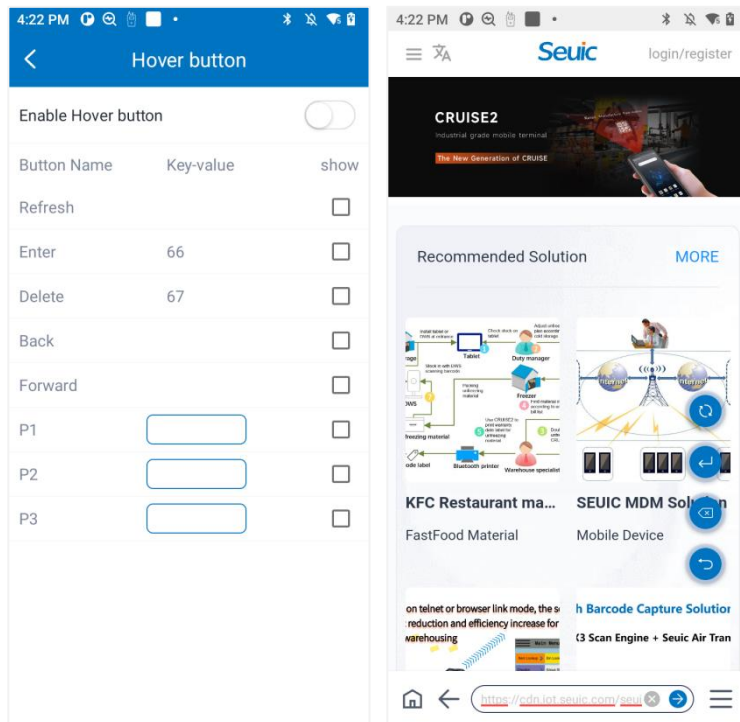
To add a bookmark to the browser home page, click More in the lower right corner of the page you are visiting.



- Add a web page to your favorites: When visiting a web page, you can open the Settings menu from the lower right corner of "More", and click add to favorites. You can also open the favorites from the menu.
- Add a bookmarked web page: Enter the bookmarked web page, click the add button in the upper right corner, manually enter the url and click OK to add the web page.
- Delete the bookmarked url: The url in the bookmark can be deleted by clicking the delete button.

5. Floating button

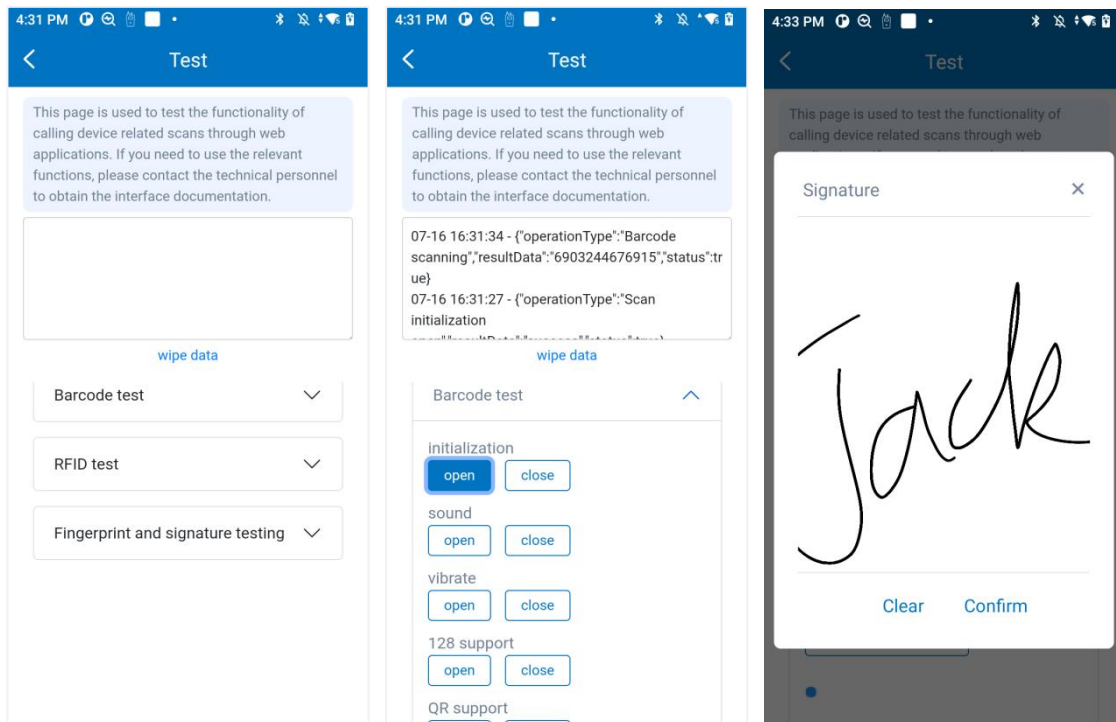
Supports the use of commonly used quick floating buttons such as refresh, Enter, delete, return and custom, which can be used in full-screen mode. You can also customize a key value for some business system pages to achieve some special functions.



- Enable hover buttons: Enable and check the relevant buttons to display the relevant hover buttons in any interface of the browser application.
- Refresh key: used to refresh the current page;
- Backspace key: When there is input focus, click to realize the function of backspace confirmation;
- Delete key: Delete the characters in front of the input box at the focus one by one;
- Back key: return to the previous page;
- Forward key: forward to the latest page of this website (use it in combination with the back key);
- P1/P2/P3: Custom button, which can fill in the key value to realize custom functions (web page adaptation development is required. Some button key values are defined in the web page to realize some functions, and then this key value is filled in here).

6. Sweep test

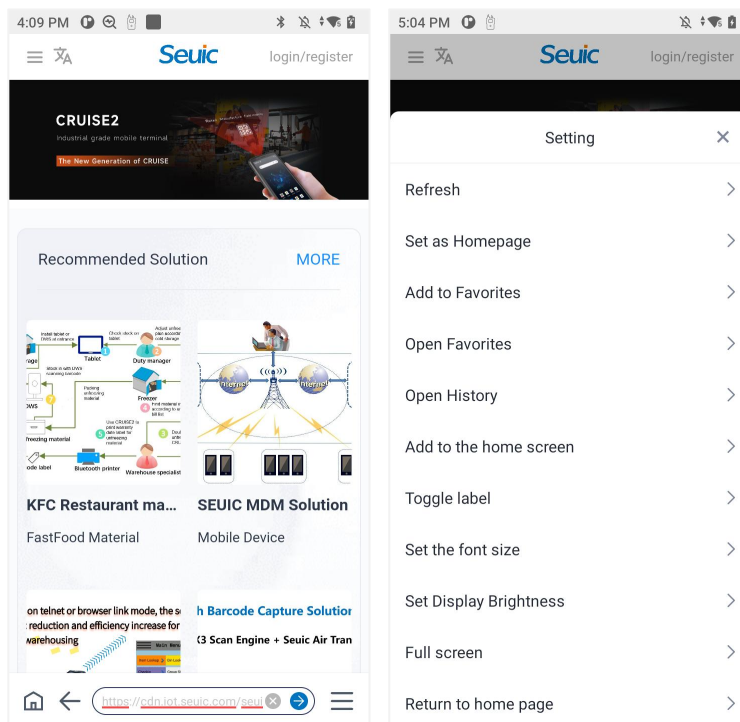
The Industrial Browser features iterative upgrades supporting WEB program calls for device scanning, RFID, fingerprint recognition, and other capabilities. It integrates front-end interfaces with native interaction functions, currently including barcode scanning, RFID scanning, fingerprint and signature entry. For detailed API integration procedures, technical personnel may consult the "SEUIC Industrial Browser API User Guide".



- Barcode test: The test needs to click initialization, and then click relevant functions as needed;
- RFID test: Click to connect, and click the relevant function test as needed;
- Fingerprint and signature test: used for medical tablet and other devices with fingerprint module in SEUIC, which can test signature and fingerprint input and recognition.

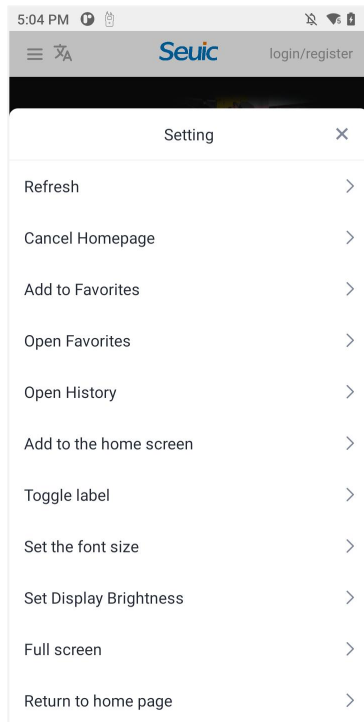
7. Web functionality

Enter the url to open the page. You can open the home page, go back, enter a new url and more Settings in the operation area at the bottom of the page. Click the "More Settings" button in the lower right corner to set the web page.



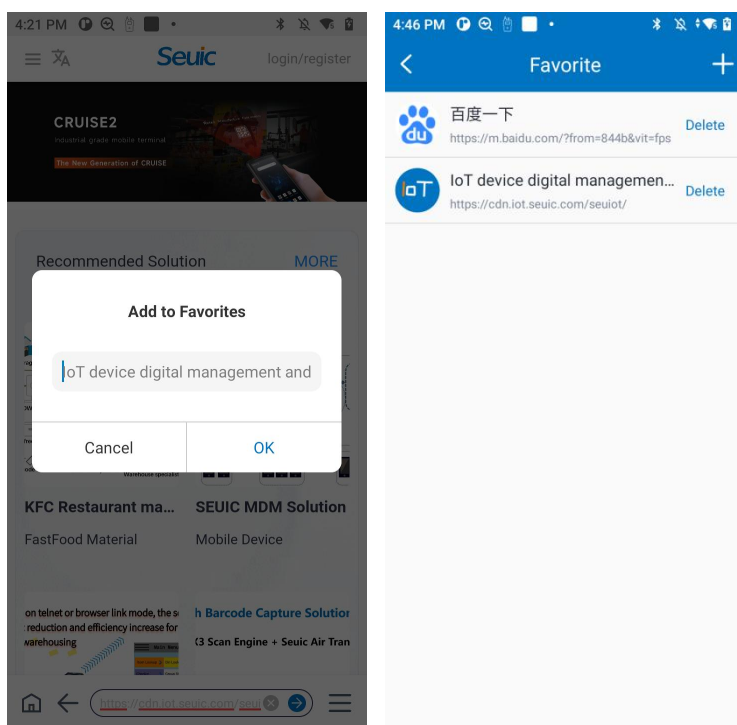
1.1 Set the home page

Set as Home Page: Set the current page as the home page. After setting, you can click the home page icon to quickly access it. If the home page is set, the home page will be automatically opened when entering the browser later. If the current page is already the home page, this menu becomes "Cancel Home Page". Click to cancel the home page setting.



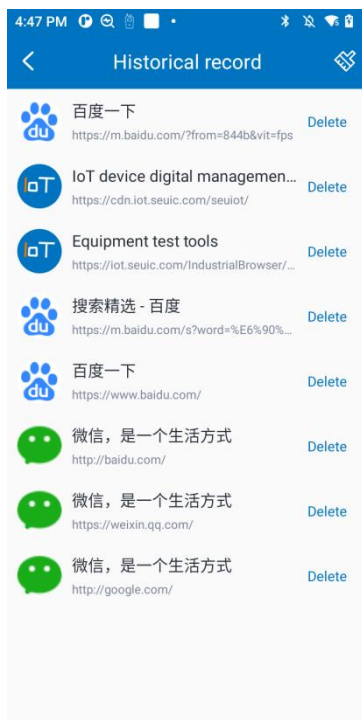
1.2 Add to favorites and open favorites

Add the current page to your favorites, and you can customize the name of the page you want to save. Open your favorites and click to access other pages in your favorites.



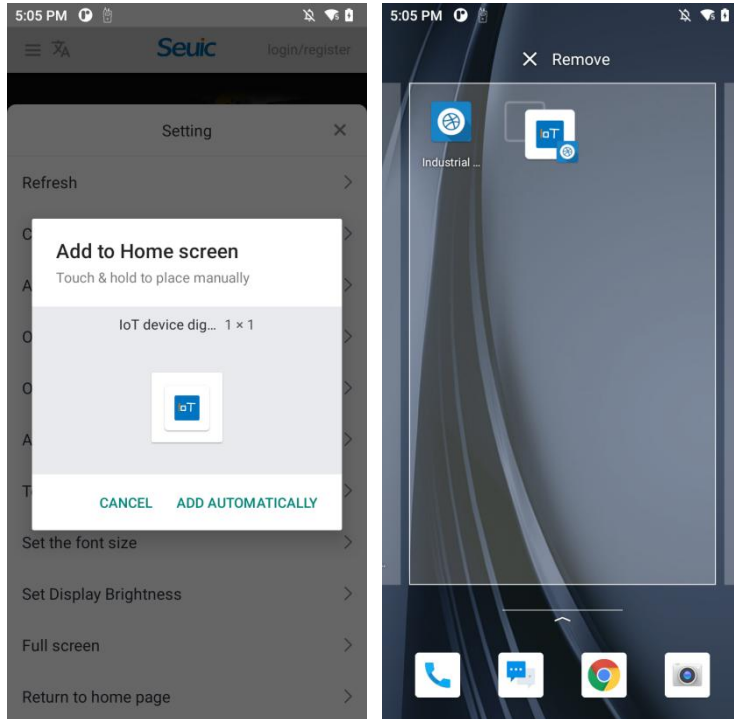
1.3 Open the history

In "More", click "Back to the previous page" to go back to the previous page, and also support the phone back button to go back to the history interface.



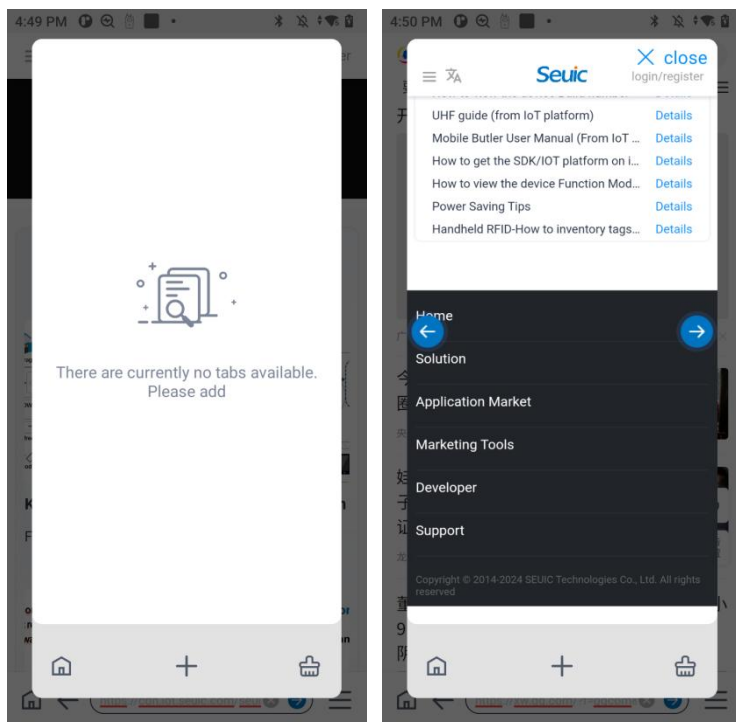
1.4 Add to Home Screen

You can add the current webpage as a bookmark to the home screen for quick access. Bookmarks added to the desktop can be long pressed to remove them.



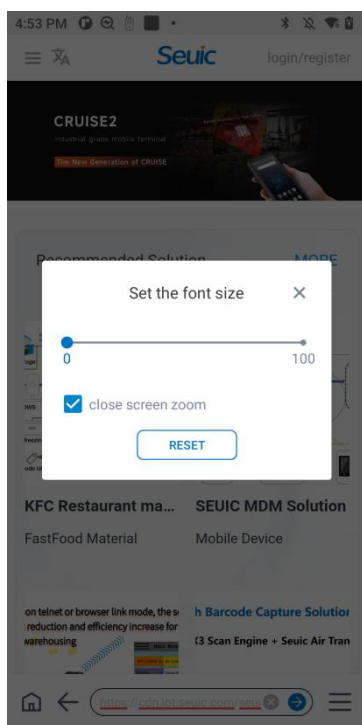
1.5 Switch tabs

Click the "Switch labels" button to add multiple labels. Click the "+" button to enter the address to add a new page, and you can add multiple pages. Multiple labels can be switched by left and right arrows, and you can delete a single label, clear all labels, quickly jump to the home page, actively add tabs, etc.



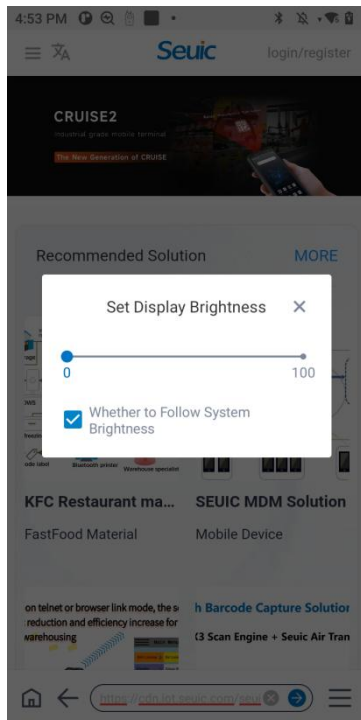
1.6 Set the font size

The Industrial Browser supports font zooming, which adjusts the font size without changing the interface proportion. If the auto-zoom function is selected, the manual font size adjustment function will be disabled, and the page will automatically restore to the original adaptive size.



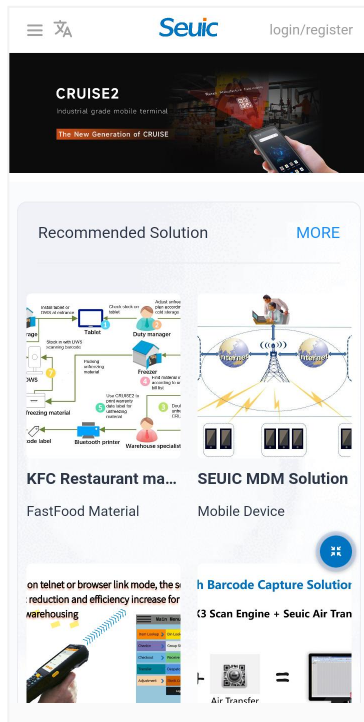
1.7 Set the screen brightness

Custom interface brightness, which follows the system brightness by default.



1.8 Full screen display

You can set the browser to display in full screen. In full screen state, the status bar and operation function area are not displayed. The hover button will be automatically displayed in full screen state. Click the hover button to exit the full screen state.

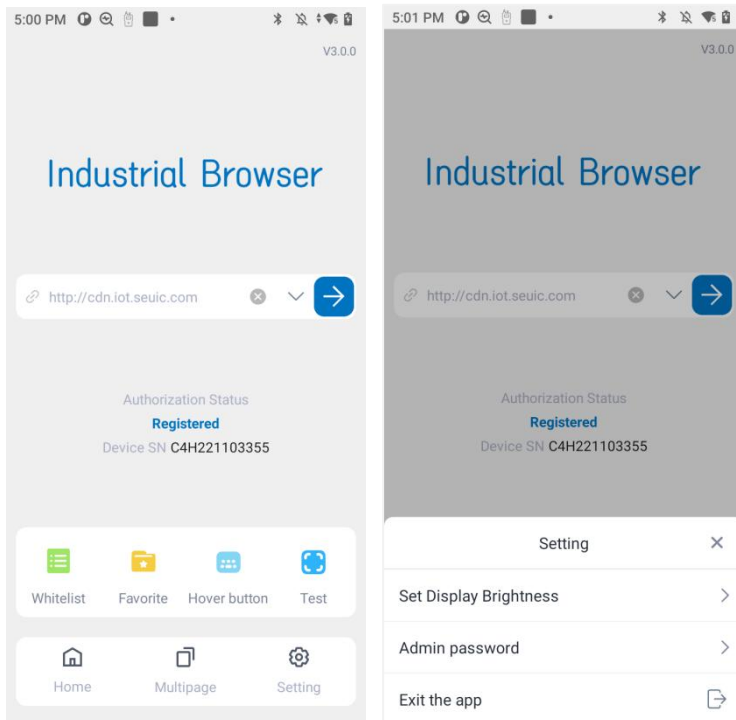


1.9 Return to the browser home page

Click back to the home page of the browser, you can return to the initial page of the browser (not the set home page).

8. Browser menu

The Industrial Browser has three default menus: Home, Multipage and Setting.



- Home page: If set, click to quickly enter the home page;
- Tag: the same as 1.4 above to switch tags;
- Settings: Set the screen brightness as described above 1.6; If the administrator password is not set, you can set the administrator password; if the administrator password is set, you can modify the password; if you forget the password, contact the administrator to obtain the super password (the super password is obtained and generated in the same way as mobile Manager); Click exit the application to exit the browser.