

Scan tool instruction manual

Directory

Scan tool instruction manual ..... 1

1. Main interface ..... 2

2. Scanning interface ..... 2

3. Settings interface ..... 3


    3.1. Parameter settings page ..... 4

    3.2. Scan Settings page ..... 5

    3.3. Profile settings page ..... 16

4. Manager interface ..... 18

## 1. Main interface

Find this icon on the desktop  , open to enter this interface and press Scan to scan normally.

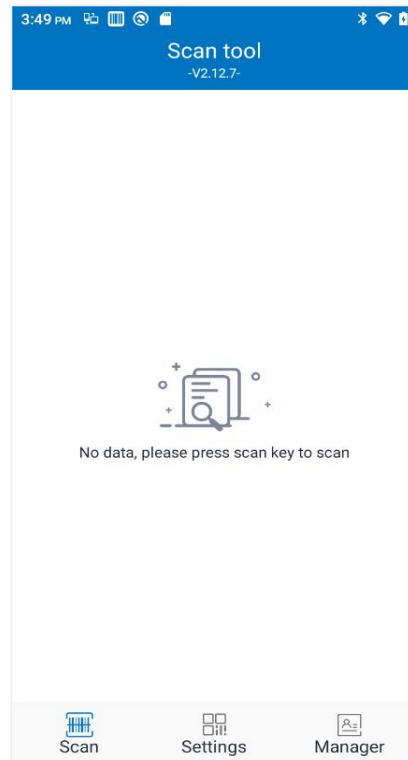


Figure 1-1 The main interface of the scan tool

## 2. Scanning interface

After successful scanning, the scanned barcode will be displayed on the scanning interface, and if scanning statistics are enabled in the settings, the statistics will be displayed at the bottom of the page. Clicking the Clear button will clear all displayed barcodes.

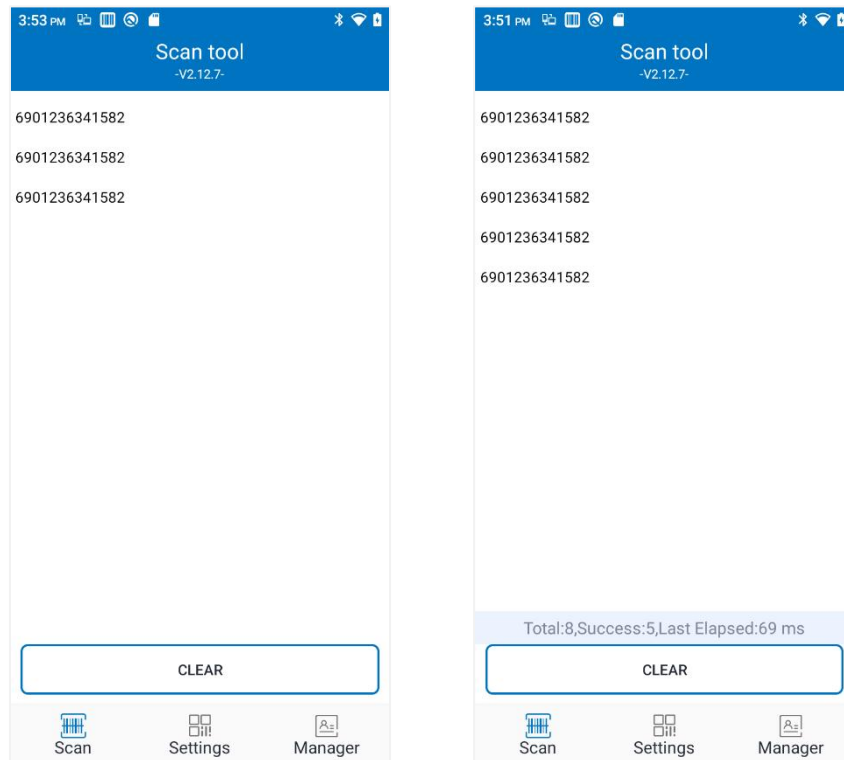


Figure 2-1, 2-2 scanning interface

### 3. Settings interface

Click the bottom settings tab to enter the setting interface, the top of the setting page is divided into three tabs are parameter settings, scan settings, profile settings, and tabs can be switched by clicking and swiping.

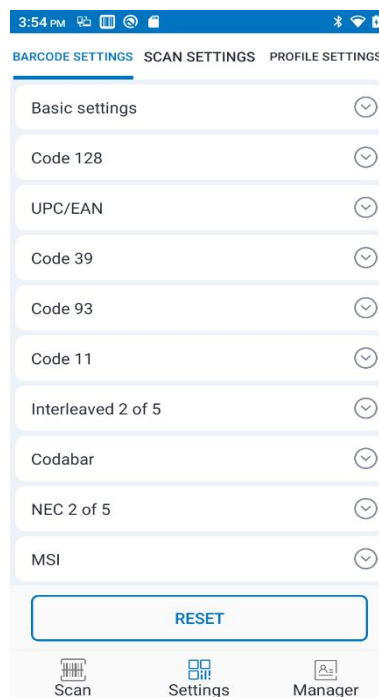


Figure 3-1 Setting

### 3.1. Parameter settings page

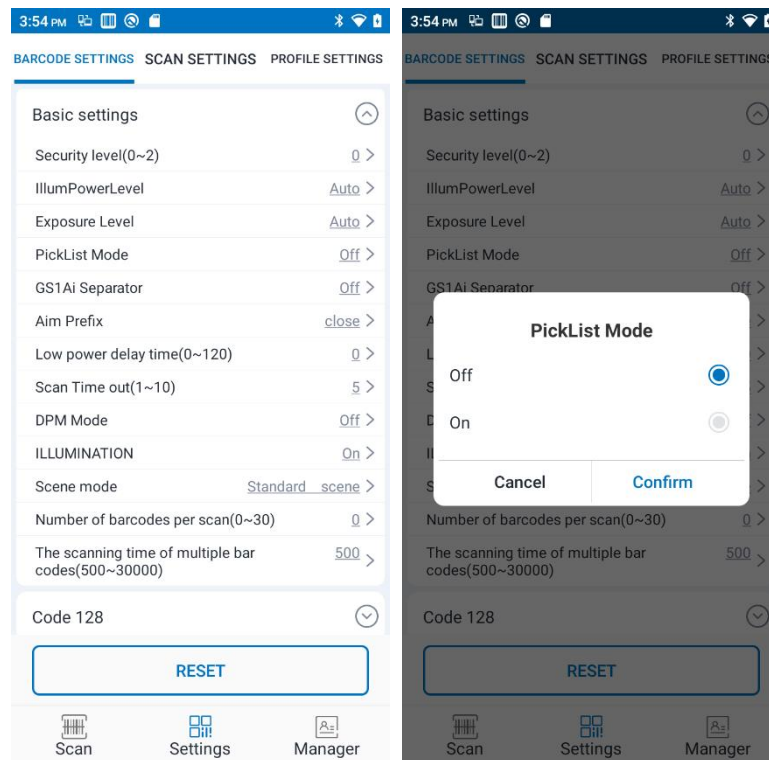


Figure 3-2 Parameter settings

Click the drop-down button on the right to display the setting options, click each option will appear the corresponding pop-up box for parameter setting, click Reset to reset default settings.

Note: There are differences in the basic settings of different types of scan engines, and the actual display of the scan engines shall prevail.

Figure 3-2 above is an example, the model is D700s. The following items are included in the basic setup:

- (1) Security level: mainly for defacing barcodes, divided into three levels. The higher the level of security, the harder it is to identify the defaced barcode, preventing misidentification. Increasing the security level results in a slower scanning speed.
- (2) IllumPowerLevel: default auto, you can set 1-10 ten levels by yourself.
- (3) Exposure Level: Adjust the exposure intensity of the scan engine sensor. It is divided into four levels: automatic, low, medium and high, the automatic is used by default and adjusted to other levels according to different occasions.

- (4) Aim mode: Turn on the aim mode, the scanning laser aim must be on the barcode to scan the barcode, if it is turned off, the laser aim needn't be on the barcode. Due to the optical characteristics of the collimated laser device, the aim needs to be calibrated, and calibration is applied within a certain distance.
- (5) GS1 ai separator: Turn on the separator that indicates that the GS1 type barcode will be scanned into the barcode.
- (6) Aim prefix: After it is enabled, add the Aim prefix in front of all barcodes. The aim prefix is used to identify the barcode type.
- (7) Low power delay time: 1-120s.
- (8) Scan time out: If the scan exceeds the timeout period, the scan fails (0-10s).
- (9) DPM mode: Enable scanning DPM type barcodes.
- (10) ILLUMINATION: Turn on the fill light.
- (11) Number of barcodes per scan: After enabling multi-barcode scanning, limit the number of reads.
- (12) The scanning time of multiple barcodes: After enabling multi-barcode scanning, limit the scanning time of one scanning process, and all barcodes scanned within the time limit are counted as scanned at one time, and the timeout ends the scan.

### **3.2. Scan Settings page**

Swipe left or click to switch to the scan settings page as shown in Figure 3-3 below, you can set the basic scan switch:

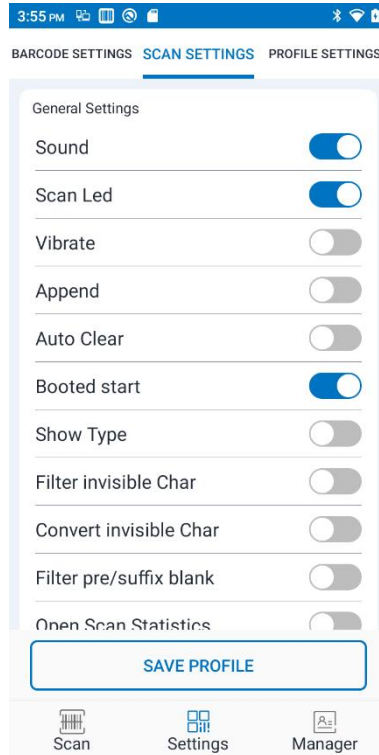


图 3-3 扫描设置

- (1) Sound: If it is turned on, the scan will have a sound prompt.
- (2) Scan led: Turn on then the logo indicator will light green when scanning.
- (3) Vibrate: When it is turned on, the scan will vibrate to prompt.
- (4) Append: open to continuously output barcode.
- (5) Auto Clear: After scanning the barcode, the previous barcode will be automatically cleared.
- (6) Booted start: Turn on to automatically open the scanning program when booting.
- (7) Show type: Turn on to display the barcode type when scanning the barcode.
- (8) Filter invisible char: Turn on to filter invisible characters in barcodes.
- (9) Convert invisible char: Turn on to convert the invisible characters in the barcode to the corresponding ASCLL code value.
- (10) Filter pre/suffix blank: Turn on to filter the first and last spaces in the barcode.
- (11) Open scan statistics: Enable to display scan statistics on the scanning interface.

(12) Barcode float: After opening, outside the application, the barcode will be displayed as a toast.

(13) MultiCode counting display: After it is turned on, scanning to barcodes in multi-barcode mode and multi-barcode (raise hand stop) mode will have a floating window to display the number of barcodes that have been scanned.

(14) Loop scan interval: The mode in which the cyclic scan interval can be selected in the settings: normal mode and enhanced mode. The enhanced mode can set the scanning interval in the case of scanning with barcode and without barcode in MS, as shown in Figure 3-4. Clicking [Default] will revert to the default normal mode with an interval of 1000ms

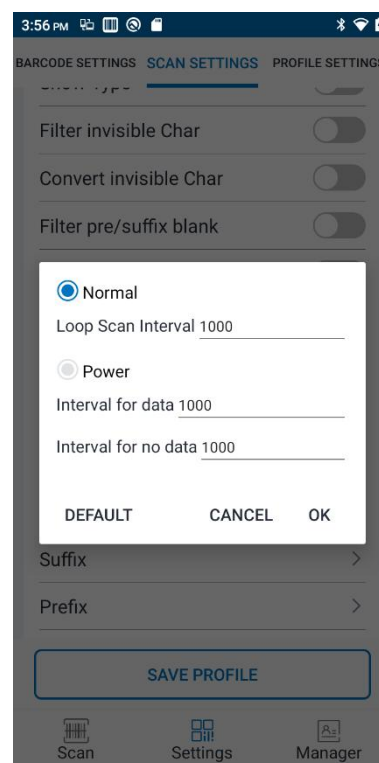



Figure 3-4 Loop scan interval setting interface

(15) Replace string items: The characters specified in the barcode can be replaced with other characters, as shown in Figure 4-3.

Click the  icon to add a replacement rule, click Modify to modify the corresponding rule, and click Delete to delete the corresponding replacement rule.

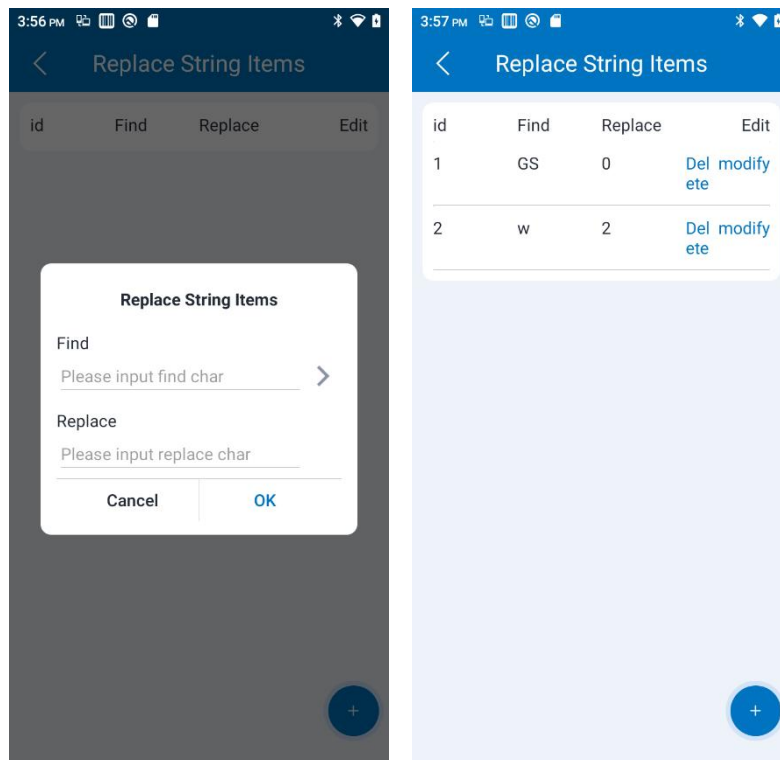


Figure 3-5 Character replacement setting screen

(16) Multibarcodes: as shown in Figure 3-6, optional bar code splicing and Code 128 splicing, if you turn on the multi-barcode function after checking, the scanned barcode will be automatically spliced. Code128 barcode is more special, if Code128 barcode splicing is checked separately, only Code128 barcode will be spliced; If you check both barcode splicing and Code128 barcode stitching, the scanned Code128 barcode will be spliced into one barcode first, and then the spliced barcode will continue to be spliced with other barcodes. After clicking the checkbox, you can set the barcode separator, as shown in Figure 3-7.

The optional barcode separators are shown in Figure 3-8, with custom, no separator, spaces, [,] and [;], which defaults to no separator. If you choose Custom, you can enter a custom symbol, as shown in Figure 3-9.



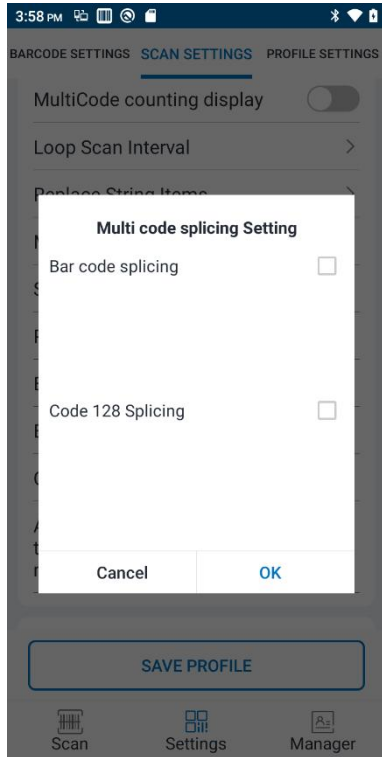


Figure 3-6 Multi-barcode setup interface 1

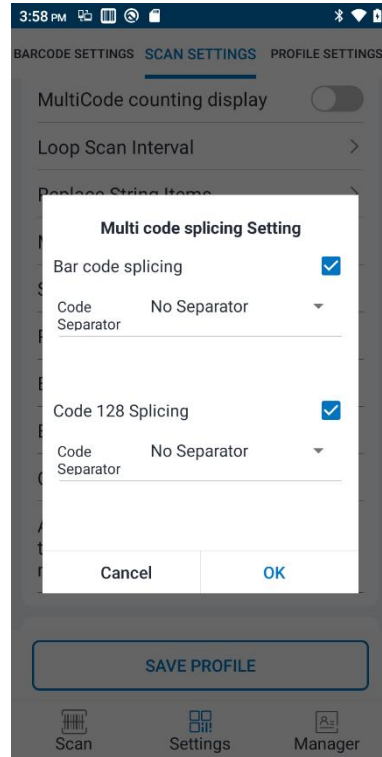


Figure 3-7 Multi-barcode setting interface 2

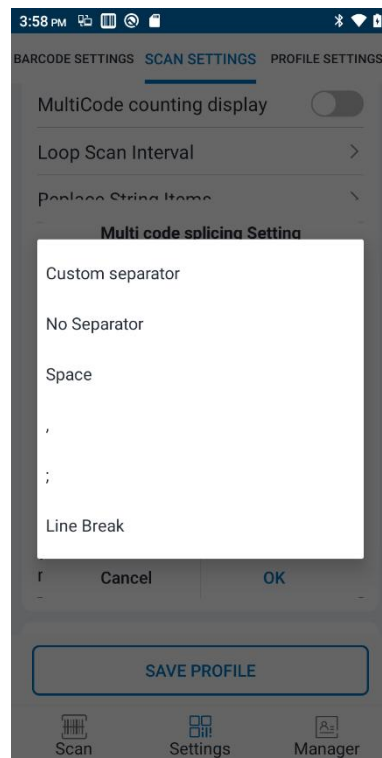


Figure 3-8 Multi-barcode setting interface 3

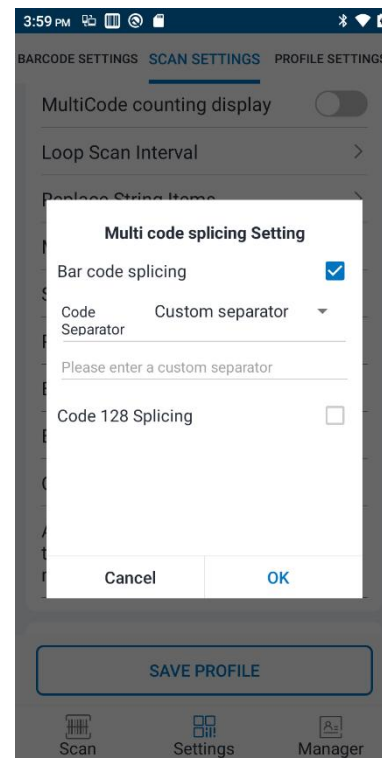


Figure 3-9 Multi-barcode setup interface 4

(17) Suffix: You can add barcode output suffixes (can be numbers, letters, special

characters, etc.) by yourself.

(18) Prefix: You can add the barcode output prefix (can be numbers, letters, special characters, etc.) by yourself.

(19) Barcode truncation: the barcode can be truncated, as shown in Figure 3-10, you can choose two modes, position mode or character mode. To select the position mode, you need to enter the start position and end position, and the barcode will be truncated from the start position to the end position. Select the character mode, you need to enter the start character and the end character, and the barcode will be truncated from the start character to the end character.

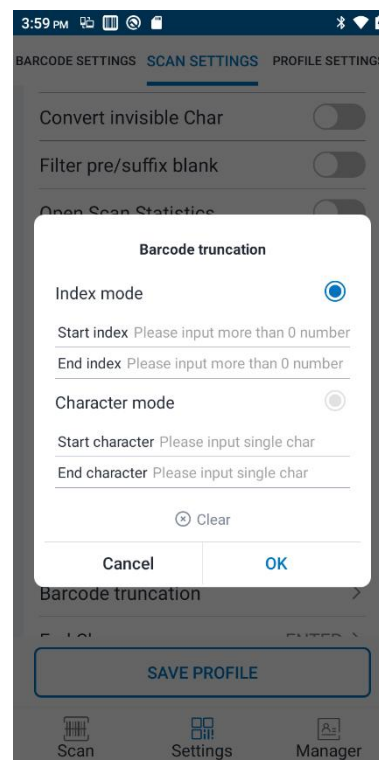


Figure 3-10 Barcode truncation setting interface

(20) End char: You can choose the barcode ending output character, including: Enter, Tab, Space, CR\_LF, None .

(21) Charset: Set the corresponding character set to the scan engine, the barcode will be output in this character set, the optional character set is shown in Figure 3-11:

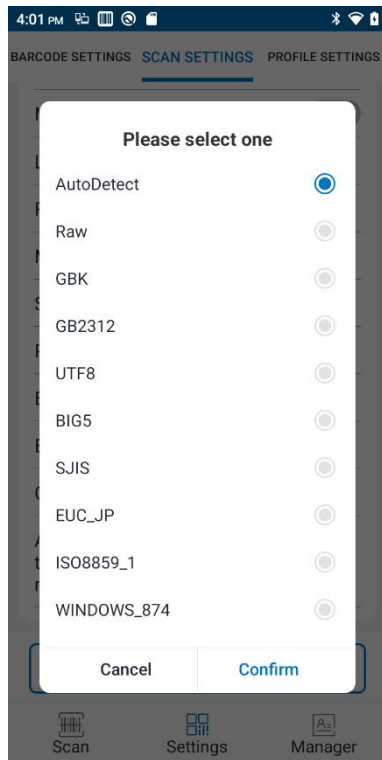


Figure 3-11 Character set setting interface

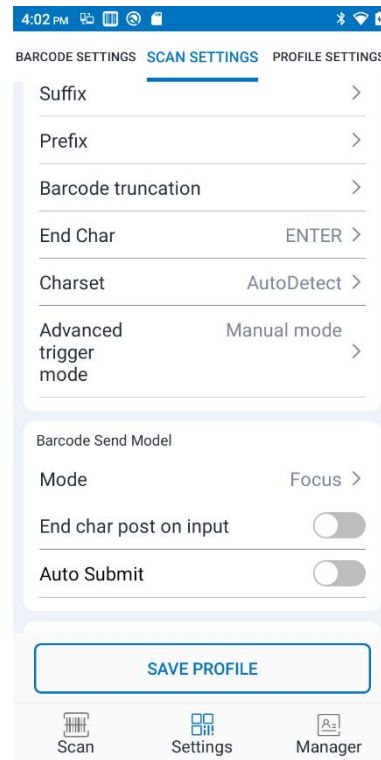


Figure 3-12 Scan setting interface 2

(22) Trigger mode: You can set the trigger mode of the scanning behavior, and the optional mode is shown in Figure 3-13.

1. Manual mode (raise hand to stop): Press the scan button to start scanning, release the scan button to stop.
2. Hand-free manual mode: Press and lift scan button to perform a scan, scan to barcode or timeout automatically stop.
3. Press for aiming & loose for scanning: When the scan button is pressed, the laser is fired from the scan engine, and the scan button is released to flash out the fill light.
4. Press for aiming and press again for scanning: The first time you press and lift scan button to scan the head out of the laser, and the second press and lift scan button to fill the light for a scan.
5. Manual presentation mode (press again to stop): Press and lift scan key for the first time to perform a loop scan and press and lift scan key the second time to stop loop scanning.
6. Hand-free continuous trigger mode: The first time you press and lift scan button

to perform cyclic scanning, but the light does not go out after scanning the barcode, and the second press to press the lift scan button to stop loop scanning.

7. Continuous trigger mode (raise hand to stop): Press the scan button to perform loop scanning, but the light does not go out after scanning the barcode, and the scan stop when the scan button is raised.
8. MultiCode: related to the scan engine, not all models support it. Multiple barcodes can be scanned at once, requiring slow mobile scanning.
9. MultiCode (report on lift): related to the scan engine, not supported by all models. Stop scanning and output results when the number of multiple barcodes reaches the specified number or when the scanning time of multiple barcodes reaches, or the scan key is actively raised.

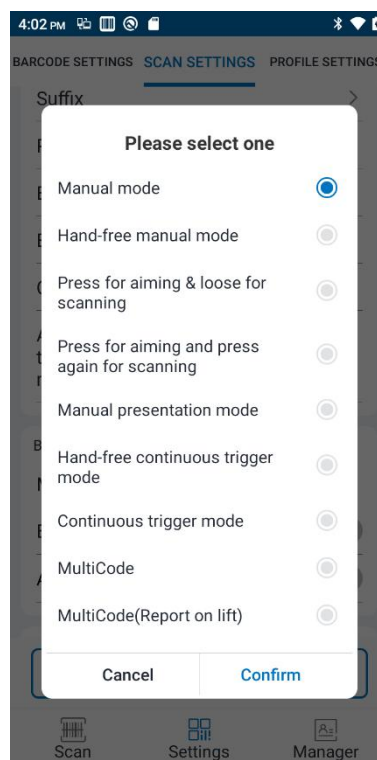


Figure 3-13 Trigger mode setting interface

(23) Barcode send mode: you can choose to focus input (FOCUS), broadcast mode (BROADCAST), emulated keyboard (EMUKEY) or clipboard mode (CLIPBOARD) to send (EMUKEY requires selecting an input method that supports hard keyboards), as

shown in Figure 3-14.

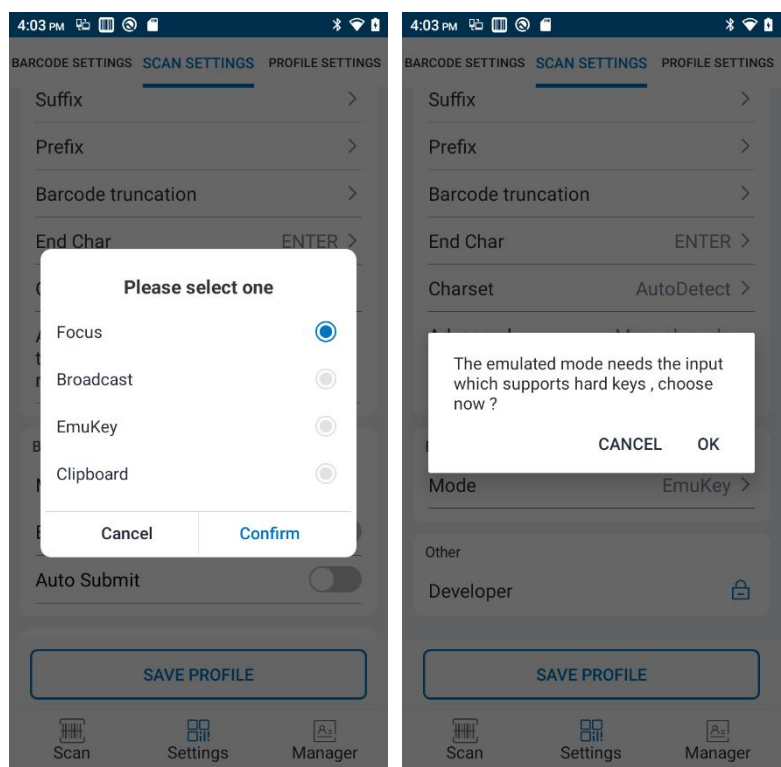


Figure 3-14 simulates keyboard settings

(24) Developer settings: Enter the password 888888, as shown in Figure 3-15.

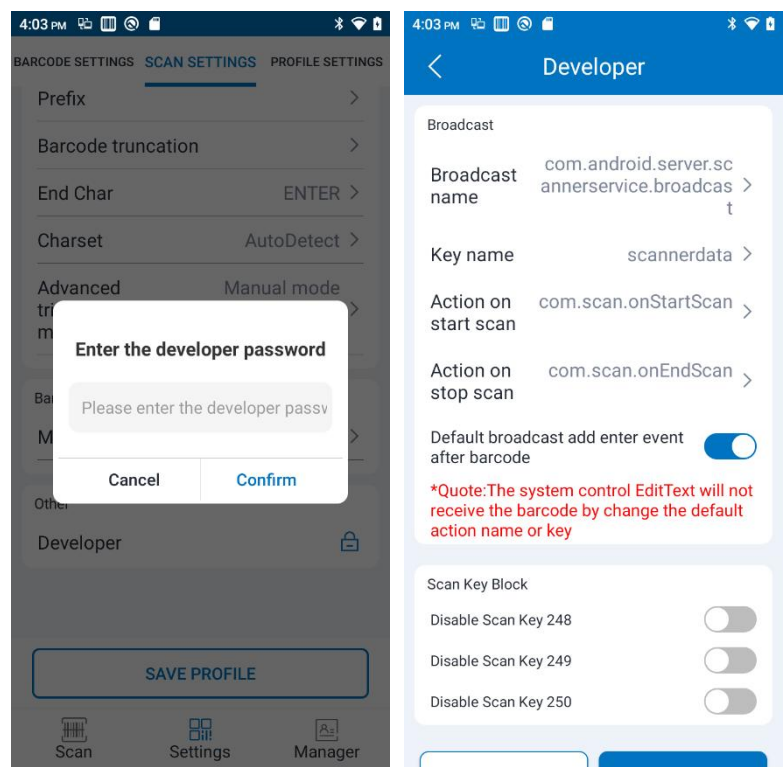


Figure 3-15 Developer item settings

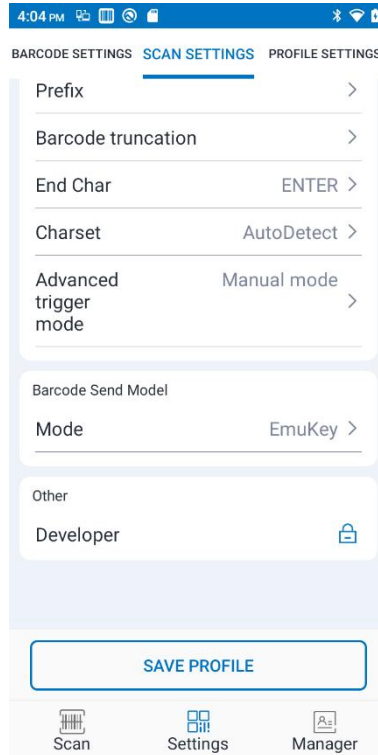


Figure 3-16 Application settings interface 3

(25) Developer - scan key blocking: block the specified scan key, after opening, the scan key no longer has the trigger scan function.

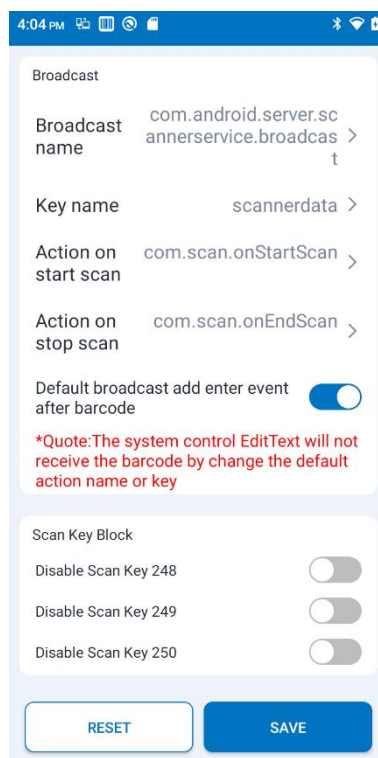


Figure 3-17 Scan key mask

In addition, as shown in Figure 3-16, there is a permanent save profile button at the bottom, click Save Profile to generate a plan in the later tab plan settings. The specific steps are as follows: Figure 3-18: Click Enter the administrator password first:4007770876 (initial password, which can be modified later on the management page) After the verification is completed, enter the name of the profile as shown in Figure 3-19.

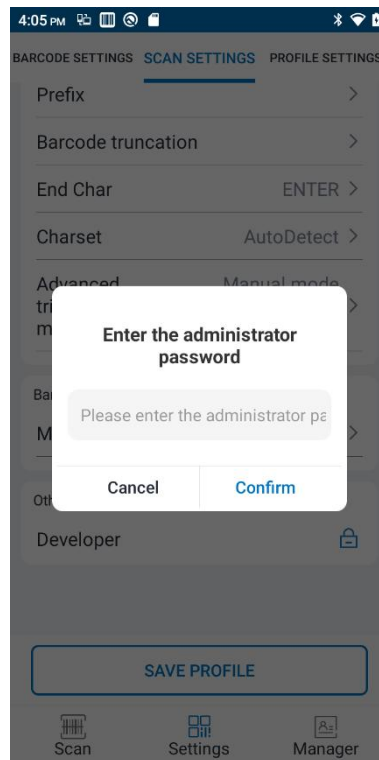


Figure 3-18 Enter the administrator password

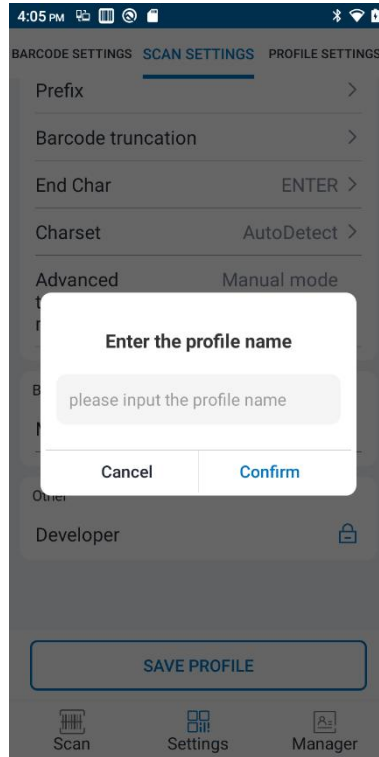


Figure 3-19 Enter the profile name

### 3.3. Profile settings page

Click the Profile Settings tab or slide to the current tab, this page will display the previously saved plan, if it has not been saved before, there will be a system default profile.

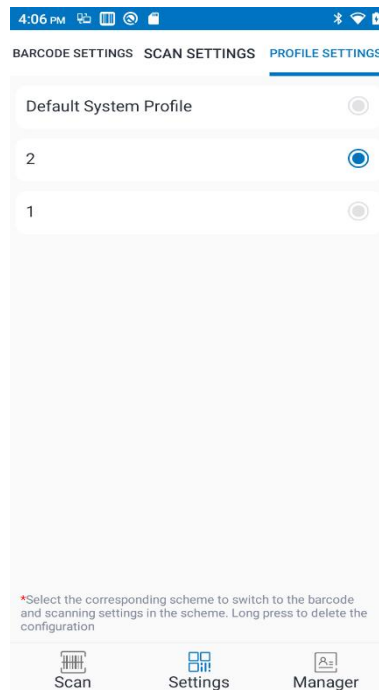


Figure 3-20 Profile Settings page



Click the corresponding plan to pop up a confirmation pop-up box and click Confirm to switch to the selected plan.

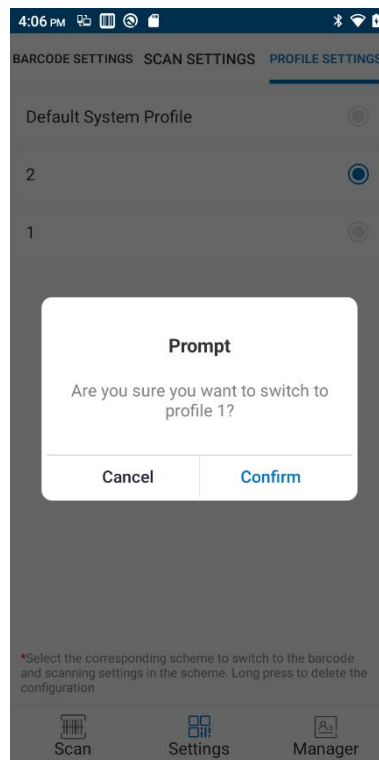


Figure 3-21 Switching profile prompt pop-up box

Long press the corresponding profile to pop up a confirmation pop-up box, and clicking Confirm will delete the selected profile.

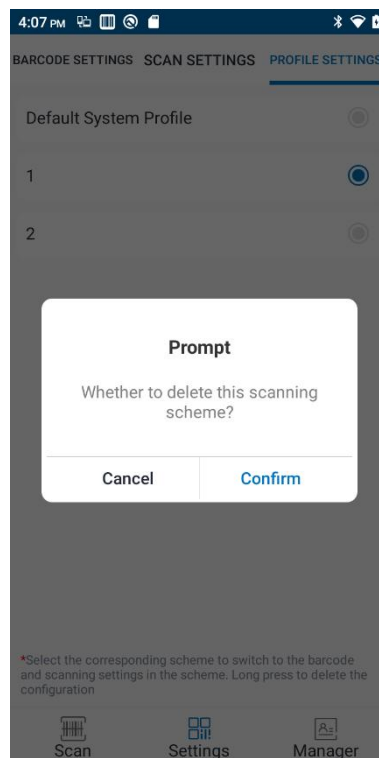


Figure 3-22 Delete the profile prompt pop-up box

## 4. Manager interface

Click the Manager tab under the main interface to enter the management interface, as shown in Figure 4-1:

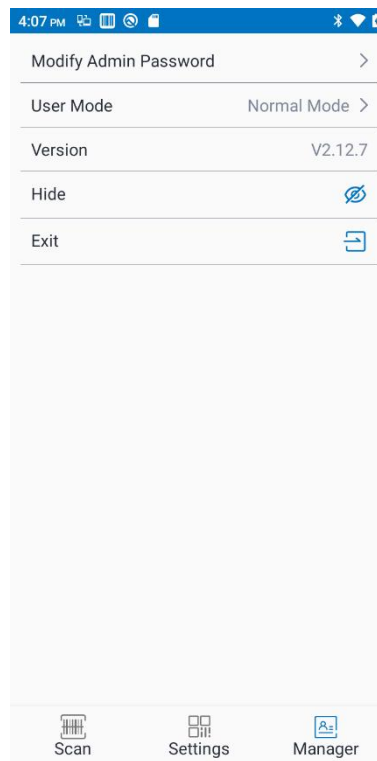


Figure 4-1 Manager interface

### (1) Modify admin password

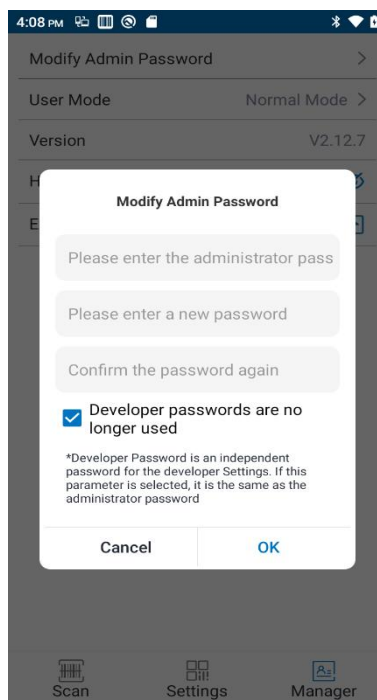


Figure 4-2 Modify admin password

## (2) User mode

User modes are divided into normal mode and guest mode. Figure 4-3. The default is normal mode, switching from normal mode to guest mode can be direct switched, switching from guest mode to normal mode requires an admin password. The guest mode cannot be set up, as shown in Figure 4-4. If the default mode is guest mode, each time the app exits the background and re-enters it, it will become guest mode, even if it has switched to normal mode.

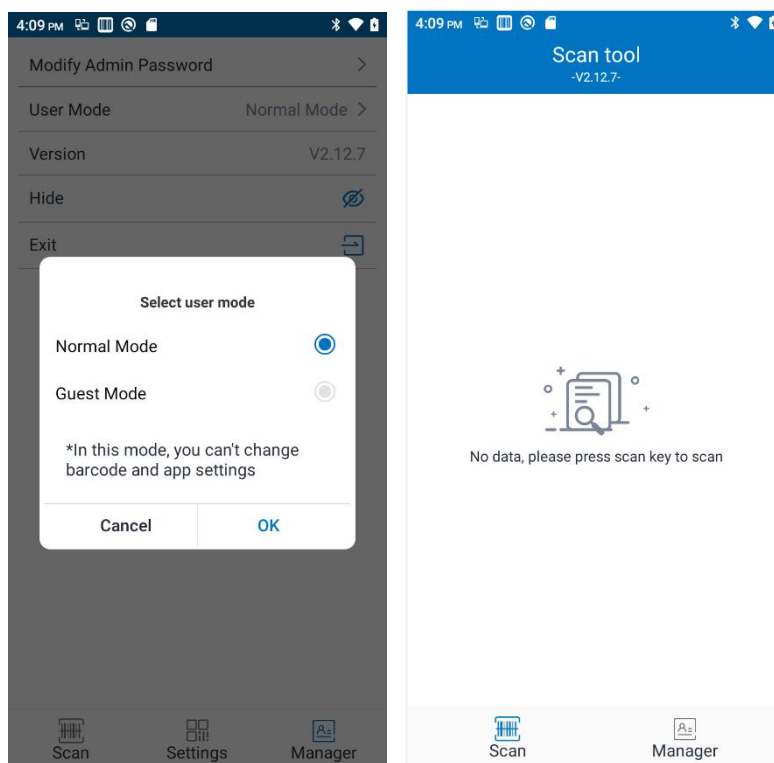


Figure 4-3 User mode interfaceFigure 4-4 Guest mode interface

## (3) Program hiding and exiting

Select [Hide], the program will run in the background, and press the scan on any editing interface to scan.

Select [Exit], the program will exit and close, and the scan key is not available at this time.